

[View this email in your browser](#)



## Business Supporters Newsletter: June 2026

Dear All

We're delighted to welcome the following companies last month as business supporters of the AIPP: Source Civil Ltd.

### June 2026's newsletter highlights include:

- To spot this month: **Keep an eye out for the red-tailed bumblebee**
- To do this month: **Create a short-flowering meadow through reduced mowing (and lift the cuttings)**
- Plan for pollinators: **Which actions to think about for Q3 on your business site or through local community sponsorship**
- Learn about biodiversity: **Kerry Wild Bee Festival 2026, and other wild bee festivals around the country**
- Our Farmer Neighbours: **How Small Farming Changes Can Support Bumblebees**
- Does your business site contain areas of species-rich grassland? **Review the Grasslands Trail booklet.**
- Do FIT Counts: **Can you help by carrying out a Flower Insect Timed Count on Clover (White or Red) in June?**
- **Pollinator noticeboard: June 2026** - Review key nature accelerator initiatives to support your work on CSRD/VSME: [Business for Biodiversity BFBI](#) (with KPMG/ Deloitte), Business in the Community Ireland [BITCI](#) and Business in the Community Northern Ireland [BITCI NI](#).

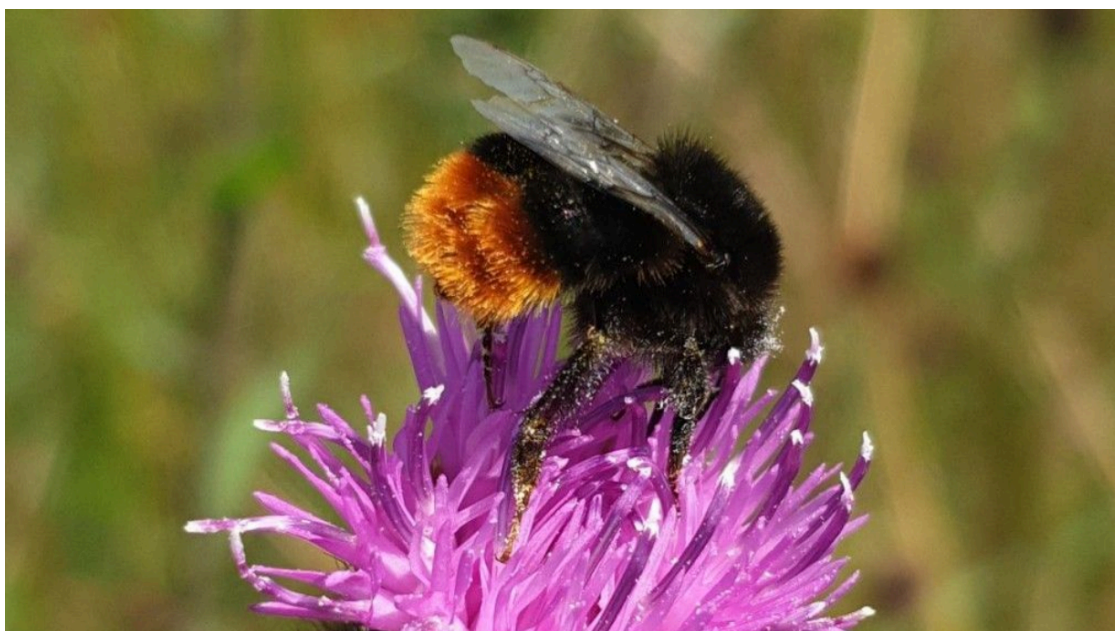
The All-Ireland Pollinator Plan is a voluntary framework bringing together different sectors across the island of Ireland to create a landscape where

pollinators can survive and thrive. Its implementation is coordinated by the National Biodiversity Data Centre.

---

## **TO SPOT THIS MONTH: keep an eye out for the Red-tailed Bumblebee**

This bumblebee is very common and is often spotted on business sites and in gardens. The females are entirely black with a red tail. PIC Jonathan Derham.



**SUBMIT** your bumblebee sightings (single - casual records)  
checked/validated by an ecologist)

---

## **TO DO THIS MONTH: Create a short-flowering meadow through reduced mowing (and lift the cuttings!)**

No Mow May is over, but why not keep going on your business site with Let It Bloom June? Reducing mowing throughout the summer is one of the best things you can do for pollinators. There may also be areas you never mow and let grow wild. Red and White Clover is one of the most important food plants for wild bees in June. Mow less to help them grow naturally, and see which other native wildflowers appear on your business site or in your garden lawn. [REMEMBER sowing wildflower seed mixes is NOT a biodiversity action. It's a horticultural action.](#)

**Establishing a meadow on bare ground after construction works?** In areas where you want to establish a meadow on bare ground, perhaps after construction works, we suggest you purchase a fine-leaved grass mix that includes species like Red Fescue, Common Bent, Crested Dog's-tail and Sweet Vernal Grass. Ensure seeds purchased are native and of Irish origin. This will prevent soil erosion and dominance of more aggressive weedy species. Going forward, the area can then be managed as a short or long-flowering meadow, and wildflowers will begin to appear naturally over time.

## Spot Native Wildflowers

Keep an eye out for these native wildflowers. Some of these species will pop up naturally in your short-flowering meadow. They are important sources of nectar and pollen for our hungry pollinators. If you spot any of these flowers, submit your sightings to the National Biodiversity Data Centre at <https://records.biodiversityireland.ie>



Dandelion



Daisy



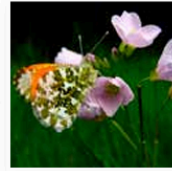
Buttercup



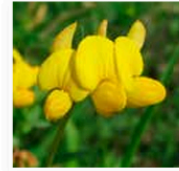
White Clover



Red Clover



Cuckooflower



Birds-foot Trefoil



Orchid



Speedwell



Selfheal



Vetches



Knapweed

National  
Biodiversity  
Data Centre  
RECORDING NATURE'S HISTORY



Photos: Cathal Noonan, Owen Beckett, Leon VanderNoll, Ruth Wilson, J. Cullen, Zoë Devlin, Isobel Abbott

### Create a short-flowering meadow

**GUEST BLOG: Low Mow lawns in May - read more on what appeared**

## PLAN FOR POLLINATORS: Which actions to think about for Q3

In planning for Q3 the following are suggestions you might consider for your business site or through sponsorship in the local community.

1. Instruct supplier contractors such as Landscapers /Grounds Maintenance, to *Let Them Fly July* by implementing reduced mowing and lift the cuttings (Action 5, 6 & 23).
2. Seek alternatives to pesticides (including herbicides, insecticides and fungicides), (Action 17 & 18). N.B. Continue to spot-spray invasives species [www.invasives.ie](http://www.invasives.ie)
3. Create 'Thematic Place for pollinators' – a sensory, herb, moon or rainwater planter (Actions 9-13).
4. **No physical footprint?** Sponsor a biodiversity action in your local community (Action 24) via e.g., Tidy Towns, or local school, sports/GAA club or faith community. Consider sponsoring a 'Thematic Place for pollinators' or a Car park for pollinators.
5. Align communications to AIPP Key Campaigns and Messages (Action 27 & 28).

Remember neither sowing a wildflower seed mix nor having (or sponsoring honeybee hives) is a biodiversity action. See Page 21 of Businesses: actions to help pollinators for guidance and advice.

# Make a Pollinator-friendly Rainwater Planter



Rainwater planters are mini rain gardens that slow down the flow of rainwater from rooftops. By diverting rain through the planter, they reduce overflow into storm drains and can help prevent flooding.

Rainwater planters can also help biodiversity. By building your own timber rainwater planter and adding water-resistant pollinator-friendly plants, you can manage rainwater runoff and help feed wild bees at the same time.

## You will need:

- **A timber container:**  
At least 80cm deep.
- **Waterproof liner:**  
Enough to cover the inside of the planter.
- **Lengths of plastic pipe or downpipe.**
- **Gravel of different textures.**



PLAN: Q3 actions for pollinators-biodiversity

CREATE: A pollinator-friendly rainwater planter

## LEARN ABOUT BIODIVERSITY: Kerry Wild Bee Festival

The Kerry Wild Bee Festival returns on Saturday 5th and Sunday 6th July in Tralee Bay Wetlands Eco & Activity Park. A special festival launch event will take place on Monday 8th June with a talk on Reversing Wild Bee Decline by All-Ireland Pollinator Plan co-founder, Professor Jane Stout. Book your free spot below.

The Kerry Wild Bee Festival is being organised by Transition Kerry in collaboration with the Tralee Bay Wetlands Ecology Park and the Irish Wildlife Trust. The main festival will feature a series of walks and talks led by biodiversity experts and community groups on these important insects and the simple actions we can take to help them. Easy/entry level information to help you understand what is more and less helpful for the bumblebees on your business site.

Find out more about the festival events through the link below.

TALKS | WALKS | WORKSHOPS

**KERRY**  
**Wild Bee**  
**FESTIVAL 2026**  
 FÉILE NA MBEACH FIÁIN CHIARRAÍ  
 Tralee Bay Wetlands Ecology Park

**Reversing Wild Bee Decline**  
**FESTIVAL LAUNCH**  
 of the Kerry Wild Bee Festival

**Monday, 8th June 2026**  
**7pm - 8:30pm**

Jane Stout is Professor of Ecology at Trinity College Dublin and has been conducting research on wild bees for the past 30 years. She is co-founder of the All-Ireland Pollinator Plan.

**JANE STOUT**

**SCAN HERE TO BOOK**

**FESTIVAL WEEKEND**  
 Saturday, 4th & Sunday 5th July

**LOCATION**  
 Tralee Bay Wetlands Ecology Park

Logos: Transition Kerry, Ceangal, Irish Wildlife Trust, All-Ireland Pollinator Plan, Kerry, An Chomhairle Oidhreachta The Heritage Council, Wild Atlantic Way.

Kerry Wild Bee Festival events

Launch event with Jane Stout - 8th June

Other wild bee festivals in 2026

## IDEA: Do a free online bumblebee course before attending the festival

---

### **OUR FARMER NEIGHBOURS: How Small Farming Changes Can Support Bumblebees**

In our latest guest blog, Lydia Thompson of University College Dublin shares her latest research on the 'Impacts of delayed grazing and mowing on bumblebees and flowers in species rich grasslands.'

This is part of the 'Dispatches from Researchers' series, which features guest articles written by experts in pollination and related fields.

Provide information to your farm suppliers on AIPP evidence-based actions. Or work with your farmer neighbour to support bumblebees.



**READ: 'How Small Farming Changes Can Support Bumblebees'**

**VALUE CHAIN: Send 'Farmland: actions to help pollinators' to farm suppliers/growers**

---

### **DOES YOUR BUSINESS SITE CONTAIN AREAS OF GRASSLAND? The 'Grasslands Trail' adds three new sites**

A new Grasslands Trail booklet is available to download, featuring 3 new sites: Springhill, near Moneymore, Co. Derry – a National Trust NI site; Killykeeghan Nature Reserve, near Belcoo, Co.

Fermanagh – a Northern Ireland Environment Agency site; and Ballygarry, near Tralee, Co. Kerry – a privately-owned site.

The Grasslands Trail is a network of public and private grasslands spread across the island of Ireland. All of these sites are managed sensitively, with nature conservation and grassland diversity in mind. Find a link to the booklet below.



**DOWNLOAD: 'Grasslands Trail' booklet**

---

## **DO FIT COUNTS: Can you help by carrying out a Flower-Insect Timed Count on Clover (White or Red) in June?**

FIT Counts are an important way that you can help us monitor pollinators on your business site (or in your garden).

They are a quick and easy survey that involves watching a 50cm x 50cm patch of flowers for 10 minutes and counting how many insects visit. Anyone can get involved, and you can carry out a FIT Count anywhere and on any single species of flower, but where you can, please use one of our 15 target flowers.

In June, it's especially useful to carry out FIT Counts on White or Red Clover.

In 2025, 1,323 validated FIT Counts were submitted by 235 different volunteers. The average number of insects per FIT Count was 9. The most common insect group recorded were other flies followed by hoverflies then bumblebees. Gardens were the most common habitat FIT Counts were carried out in last year. Why not try one in your area to see how your site compares?

Visit the Flower-Insect-Timed Count homepage below and download the 2025 newsletter to see the full

results of the scheme last year. The FIT Count app is available for Ireland and Northern Ireland that allows you to carry out a FIT Count and upload the results in one go. PIC Burrenbeo Trust.

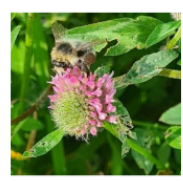
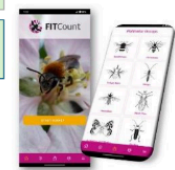
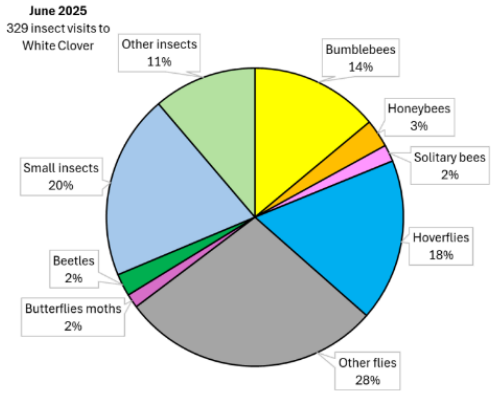
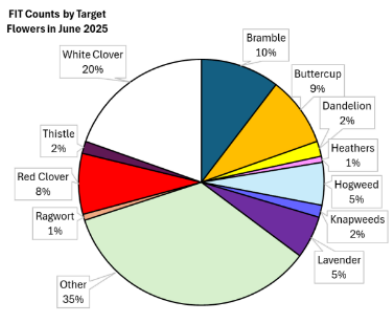


**Pollinator monitoring: Flower-Insect Timed Counts (FIT Counts)**  
<https://biodiversityireland.ie/surveys/fit-counts/>  
 Watch a 50cm x 50cm patch of flowers for 10 minutes and count how many insects visit. This scheme runs from April until September.



**JUNE** Target Flowers for June 2026: **White Clover or Red Clover**. Other target flowers to be on the look out for include Buttercup, Bramble, Common Hogweed and White-Dead-Nettle

**June 2025**  
 Total number of FIT Counts 250  
 Average Insects/FIT Counts 8.58



Bumblebee on Red Clover

Based on the 2025 data, other flies and small insects were the most common visitors to White Clover in June

**Flower-Insect-Timed Count Homepage**

**DOWNLOAD: Android app from Google Play**

**Download Apple (iPhone/iPad) app from the App Store**

## POLLINATOR NOTICEBOARD: June 2026

### RESOURCES - BLOGS - WEBINARS - EVENTS etc.

- Working as a grounds maintenance contractor with [South Dublin County Council? Check out SDCC Parks' 'Pollinator Action Plan 2026-2030' and Biodiversity Duty - Reporting Guidance for Public Bodies.](#)
- Catch up on the celebratory '[100 Tales of Hope for Ireland's Bees](#)'
- [Discover some beautiful 'Meadow Magic' with Louth school students.](#)

### WHERE TO START ON YOUR POLLINATOR-BIODIVERSITY JOURNEY?

- START with the Checklist on [Page 34 Businesses: actions to help pollinators.](#)
- Review your Local Biodiversity Action Plan (LBAP) on [Action for Biodiversity.](#)
- Engage with your local [Biodiversity Officer.](#)
- Discover which business neighbours are delivering [Actions for Pollinators.](#)

### HOW TO COMMUNICATE/ENGAGE

- Align communications with the monthly [All-Ireland Pollinator Plan Key Campaigns & Messages.](#)
- Sign up to the [AIPP business supporters monthly newsletter.](#)
- Connect through socials - Insta [@allirelandpollinatorplan.](#)
- Provide [Learning for pollinators](#) to colleagues.
- Nominate a Biodiversity Champion and/ or create a Green Team.
- Engage your [value chain with AIPP evidence-based actions.](#)
- Identify AIPP pollinator-friendly procurement ([tendering/specifying](#)) and sponsorship.

### POLLINATOR-FRIENDLY MAINTENANCE GUIDELINES

- **Maintenance:** [Native hedgerows](#), [Reduced mowing/ meadows](#) and verges (and remember to lift the cuttings), [Nesting habitat](#). Check out specific guidelines for [Business/technology parks](#), [Solar Farms](#), [Wind Farms](#), and [Healthcare sites](#).
- **Planting:** [Top Ten Guide](#), [Pollinator-friendly planting Code](#), [Orchards](#), [Planting/Management on New Construction Developments](#) (a Cluid guide) - endorsed by the AIPP.
- [Create \\*thematic\\* places for pollinators - sensory, herb, rain or moon garden/planter as part of a biodiversity walking trail.](#)
- **Working with public sector/ local authorities/ semi states?** [Review the Biodiversity Duty Reporting Guidance for Public Bodies](#)

### TRACK - MEASURE - MONITOR: MAP EARLY, MAP OFTEN

- [Score your business site](#) (Checklist Page 34) on pollinator-biodiversity-friendly actions.
- Run a [Biodiversity Maps](#) report for your site.
- Log [Actions for Pollinators \(GIS\)](#) to layer data for your site over time.
- [Track and measure what's happening to pollinators on your site](#) in a scientifically robust manner e.g., Friday FIT Counts (easy-level App) and Bumblebee Monitoring Scheme (mid-level).
- Track healthy meadow indicators: [Track/record rare bee orchids on your site.](#)
- Manage invasive species via [www.invasives.ie](#)

### CONNECT WITH NATIONAL BIODIVERSITY INITIATIVES - ESG | CSR/V/SME | TOWARDS NATURE-POSITIVE

- Join [Business for Biodiversity \(BFBI\)](#), (and KPMG/Deloitte) to explore approaches to moving towards nature-positive (CSR/V/SME) through the FREE [#Discovery Track of the Nature Strategy Accelerator Programme](#). Progressive tracks available [#Action #Strategy & #Evolution](#) with in-person workshops, peer learning and expert guidance. Contact Dr Maria Fitzpatrick [manager@businessforbiodiversity.ie](mailto:manager@businessforbiodiversity.ie), BFBI's Executive Director.
- **Business in the Community Ireland (BITCI)** - explore [Accelerate - The Business Pact for Climate and Nature](#) and BITCI's [Business Working Responsibly Mark](#) ("The Mark") Ireland's Environmental, Economic, Social and Governance (EESG) standard, verified by the [National Standards Authority of Ireland](#). Contact Cillian McMahon [CMcMahon@bitc.ie](mailto:CMcMahon@bitc.ie)

- **Business in the Community NI (BITC)** - explore [BITC's Business and Biodiversity Charter](#) Contact [Traci.Adams@bitcni.org.uk](mailto:Traci.Adams@bitcni.org.uk)

## POLLINATOR-FRIENDLY CONSIDERATIONS

Why your business should consider an:

- ALTERNATIVE action to sowing a wildflower seed mix after earthworks - Page 10 - instead choose a fine-leaved grass mix and then reduced-mowing and lift the cuttings.
- ALTERNATIVE action to honeybee hives Page 21.
- ALTERNATIVE action to sowing/gifting wildflower seed mixes. Think carefully and read [Dr Noeleen Smyth's article on the issues with wildflower seed mixes](#).
- ALTERNATIVE GIFTS include a [Bumblebee poster](#), [herb packets](#) (Page 12), [sunflower seeds](#) (Page 27), [bulbs](#) (Page 11), OR [choose from the TOP TEN guide of pollinator-friendly plants for different situations](#).

PIC Large Carder bee - Steven Falk



---

Invite Biodiversity Champions and Green Team colleagues to sign up to the monthly newsletter

---



The National Biodiversity Data Centre is a Company Limited by Guarantee with Charity status.  
Registered Charity Number: 20206927

National Biodiversity Data Centre, SETU West Campus, Carriganore, Waterford, Ireland, X91PE03

Want to change how you receive these emails?  
You can [update your preferences](#) or [unsubscribe from this list](#).