

[View this email in your browser](#)



Business Supporters Newsletter: April 2026

Dear All

We're delighted to welcome the following companies last month as business supporters of the All-Ireland Pollinator Plan: Timeless Sash Windows.

April 2026's newsletter highlights include:

- To spot this month - **keep an eye out for the Tawny mining bee**
- Most popular food plants for pollinators - **Which food plants were most popular with wild bees (bumblebees/solitary bees) in 2025?**
- Track on your business site: **It's Flower Insect Timed Counts again**
- To do this month: **Let Dandelions Bee!**
- Plan ahead: **Q2 actions to consider for your business site**
- The NBDC is recruiting for Pollinator Monitoring Research Assistants - deadline 17th April
- **Pollinator noticeboard: April 2026**

ESG | CSR/VSM | BIODIVERSITY | NATURE-POSITIVE

- Join [Business for Biodiversity \(BFBI\)](#) (and KPMG/Deloitte) to explore approaches to nature-positive through the FREE [#Discovery Track of the Nature Strategy Accelerator Programme](#) with additional tracks available [#Action](#) [#Strategy](#) and [#Evolution](#) depending on where you are in your nature-positive journey. Avail of in-person workshops, peer learning and expert guidance in relation to CSR/VSM (and VSME). Contact Dr Maria Fitzpatrick manager@businessforbiodiversity.ie, BFBI's Executive Director.

- **Business in the Community Ireland (BITCI)** - explore BITCI's [Accelerate - The Business Pact for Climate and Nature](#) and [BITCI's Business Working Responsibly Mark \("The Mark"\)](#). Ireland's Environmental, Economic, Social and Governance (EESG) standard, verified by the [National Standards Authority of Ireland](#). Contact Cillian McMahon CMcMahon@bitc.ie
- **Business in the Community NI (BITC)** - explore [BITC's Business and Biodiversity Charter](#) Contact Traci.Adams@bitcni.org.uk

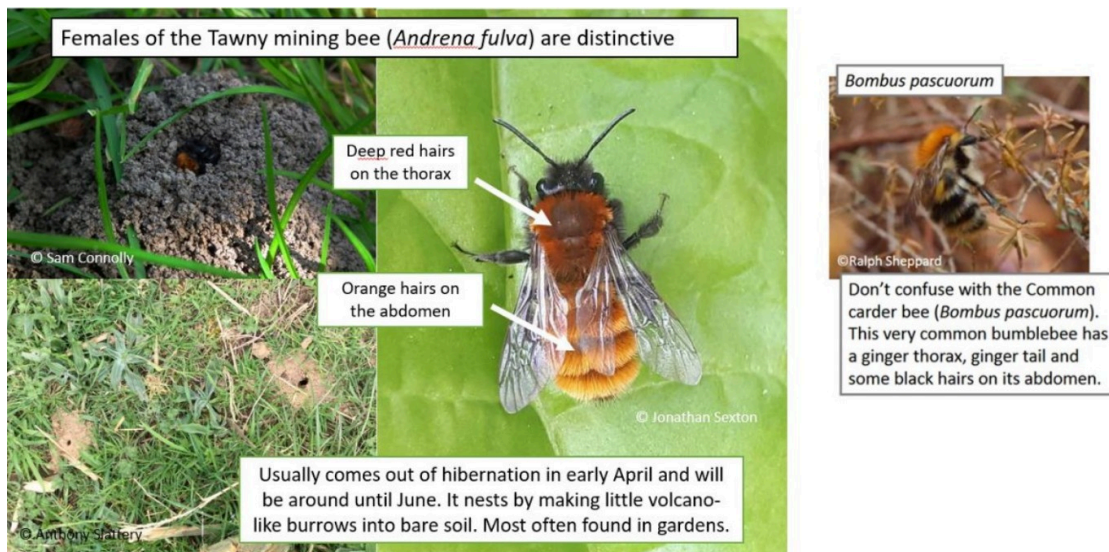
The All-Ireland Pollinator Plan is a voluntary framework bringing together different sectors across the island of Ireland to create a landscape where pollinators can survive and thrive. Its implementation is coordinated by the National Biodiversity Data Centre.

TO SPOT THIS MONTH: keep an eye out for the Tawny Mining Bee

This is one of our most distinctive solitary bees – look out for deep red hairs on the thorax and orange hairs on the abdomen. It usually comes out of hibernation in April and will be around until June. It nests by making little volcano-like burrows into bare soil and can be found on business sites and in gardens.

The Tawny Mining bee (*Andrena fulva*) was thought to be extinct for 87 years in Ireland, before being rediscovered in 2012. It is now known from counties Down, Dublin, Wicklow, Kilkenny, Tipperary, Kildare, Carlow & Waterford.

Can you help find more new populations?



SUBMIT your solitary bee sightings

MOST POPULAR FOOD PLANTS: Which food plants were most popular with wild bees in 2025?

Every year, the National Biodiversity Data Centre receives thousands of bee sightings. In 2025, 1,728 records were submitted, including information on what flower the bee was feeding on.

A huge thank you to everyone from our AIPP Business Supporters who sent in foraging data as it allows us to get a sense of what flowers they prefer. This year's data again shows the importance of native plants and of simple actions like reduced mowing (and lift the cuttings). Once again, Dandelions came out on top - proof again that native, naturally occurring wildflowers play a vital role for hungry wild bees.

Find out more in the blog below, including a summary of which plants are key each month and how you can grow them.

(Below: a bumblebee forages on White clover. Pic: Cathal Noonan.)



READ MORE about favourite food plants for wild bees in 2025

TRACK ON YOUR BUSINESS SITE: It's time for Flower-Insect Timed Counts again - in April choose Dandelions

FIT Counts are an important way that you can help us monitor pollinators. They are a quick and easy survey that involves watching a 50cm x 50cm patch of flowers for 10 minutes and counting how many insects visit. Anyone can get involved, you can carry out a FIT Count anywhere and no experience is necessary!

In April, it's especially useful to carry out FIT Counts on a single species such as Dandelion - one of the 15 target flowers. But you can choose any other single species of flower too. You do need to wait until it's sunny and at least 13C though!

In 2025, 1,323 validated FIT Counts were submitted by 235 different volunteers. The average number of

insects per FIT Count was 9. The most common insect group recorded were other flies followed by hoverflies then bumblebees. Gardens were the most common habitat where FIT Counts were carried out in last year. Visit the FIT Count website to download the 2025 newsletter and see the full results of the scheme. An app is available which covers Ireland and Northern Ireland that allows you to carry out a FIT Count and upload the results in one go.

Pollinator monitoring: Flower-Insect Timed Counts (FIT Counts)
<https://biodiversityireland.ie/surveys/fit-counts/>
 Watch a 50cm x 50cm patch of flowers for 10 minutes and count how many insects visit. This scheme runs from April until September.

APRIL Target Flowers for April 2026: **Dandelion, buttercups and white dead-nettle**

April 2025
 Total number of FIT Counts 195
 Average Insects/FIT Counts 8.2

April 2025
 628 insect visits to Dandelion

FIT Counts by Target Flowers in April 2025

Solitary bee on dandelion (Michelle Larkin)

Based on the 2025 data, other flies, small insects and hoverflies were the most common visitors to Dandelions in April

National Biodiversity Data Centre
 Documenting Ireland's Wildlife

Download Android app from Google Play

Download Apple (iPhone/iPad) app from the App Store

CATCH UP on the FIT Count webinar with Dr Michelle Larkin

TO DO THIS MONTH: Let Dandelions Bee!

This month will see the biggest bloom of Dandelions. These native wildflowers are vital sources of nectar and pollen for the likes of bumblebees. Records sent to the National Biodiversity Data Centre in 2024 showed that Dandelions were the most popular food source for wild bees. Help feed hungry pollinators this month and #LetDandelionsBee.

Reducing mowing (and lift the cuttings) on your business site even to once a month can help feed our hungry pollinators. By mowing less, you are giving native wildflowers a chance to pop up naturally. Over time this will result in pockets/strips of species-rich grassland: a vital habitat providing food and shelter for pollinators. If you're taking part in No Mow May this year and you're worried about grass growth, cut your lawn before the end of April. This will ensure the height is manageable when it's time to mow again. Make sure you remove grass clippings to help wildflowers grow. And no need for expensive, wildflower seed mixes.

Create a short-flowering meadow

By mowing just once a month, you can give native wildflowers and insect friendly grasses a chance to pop up naturally and help feed hungry wild bees. No seeds needed!



April:	May:	June:	July:	August:
<p>#Let Dandelions Bee</p> <p> When you mow, make sure you remove grass clippings so wildflowers can grow.</p>	<p>#No Mow May</p> <p></p>	<p>#Let it Bloom June</p> <p> Be creative when you mow! Cut pathways, spirals, and shapes.</p>	<p>#Help Them Fly July</p> <p></p>	<p> If your grass gets too tall at any stage, trim it with blades raised high to save the wildflowers. Leave some corners to grow long.</p>
<p> Want to do more? Create a long-flowering meadow by cutting once a year in September.</p> <p>Find out more at www.pollinators.ie</p> <p style="text-align: right; font-size: small;">Photos: Steven Falk</p>				

CREATE a short-flowering meadow on your business site (or in your garden)

The NBDC is recruiting for Pollinator Monitoring

Research Assistants - deadline 17th April

The National Biodiversity Data Centre is seeking to appoint two Pollinator Monitoring Research Assistants - one to ensure standardised monitoring across the island under the All-Ireland Pollinator Plan, and one with a focus on moths to support delivery of the EU Pollinator Monitoring Scheme in Ireland. This would be an ideal opportunity for someone who would like to gain experience in insect pollinator identification and fieldwork survey techniques. Training will be provided to the successful candidate if necessary.



**An tIonad Náisiúnta
Sonraí Bithéagsúlachta**

**National Biodiversity
Data Centre**

Q2: actions to consider for your business

As we move into April you'll be thinking about how to progress an action or two over this quarter. As indicated in the article above - Let Dandelions Bee, a short-flowering meadow (or mini meadow) on your business site is an exceptional AIPP action and is useful as a precursor to No Mow May.

But what if you have no physical business footprint?

Consider sponsoring something pollinator-friendly through your local Tidy Towns group - perhaps a 'Thematic Place for pollinators' - a sensory, herb, rain, moon planter. Or you might sponsor something directly with a local community centre, a school, a sports/GAA club or a faith community.

TOP TIP: Remember to follow the AIPP step-by-step to support evidence-based biodiversity sponsorship.

Pollinator-friendly HERBS

Our pollinating insects are in decline. One third of our 100 wild bee species are at risk of extinction. By choosing pollen-rich herbs for your garden, you will help provide much-needed food for our Bumblebees and other pollinating insects as well as creating a colourful garden that you can use. There are lots of pollinator-friendly herbs to choose from.

To learn more about the All-Ireland Pollinator Plan, see www.pollinators.ie

All-Ireland Pollinator Plan
www.pollinators.ie

National Biodiversity Data Centre
A Heritage Council Programme

Herbs shown: Angelica, Chives, Fennel, Mint, Oregano, Rosemary, Sage, Summer & Winter Savoury, Thyme

Culinary herbs

Q1-Q4 actions for pollinators-biodiversity

POLLINATOR NOTICEBOARD: April 2026

RESOURCES - BLOGS - WEBINARS - EVENTS etc.

- [NEW Learning for pollinators](#)

WHERE TO START ON YOUR POLLINATOR-BIODIVERSITY JOURNEY

- START with the Scoring Checklist on [Page 34 Businesses: actions to help pollinators](#).
- Run a [Biodiversity Maps](#) report for your site.
- Review your Local Biodiversity Action Plan (LBAP) on [Action for Biodiversity](#), engage with your local [Biodiversity Officer](#) and find out which business neighbours are delivering [Actions for Pollinators](#).

HOW TO COMMUNICATE/ENGAGE

- Connect through socials - Insta [@allirelandpollinatorplan](#) and align communications with the [All-Ireland Pollinator Plan Key Campaigns and Messages](#) and sign up to the [AIPP business supporters monthly newsletter](#).
- Nominate a Biodiversity Champion and/ or create a Green Team.
- Engage your [value chain with AIPP evidence-based actions](#).
- Identify AIPP pollinator-friendly [procurement \(tendering/specifying\) and sponsorship](#).

POLLINATOR-FRIENDLY MAINTENANCE GUIDELINES

- **Maintenance:** [Native hedgerows](#), [Reduced mowing/ meadows](#) and verges (and remember to lift the cuttings), [Nesting habitat](#). Check out specific guidelines for [Business/technology parks](#), [Solar Farms](#), [Wind Farms](#), and [Healthcare sites](#).
- **Planting:** [Top Ten Guide](#), [Pollinator-friendly planting Code](#), [Orchards](#), [Planting/Management on New Construction Developments](#) (a Cluid guide) - endorsed by the AIPP.
- [Create *thematic* places for pollinators - sensory, herb, rain or moon garden/planter as part of a biodiversity walking trail](#).
- **Working with public sector/ local authorities/ semi states?** [Review the Biodiversity Duty Reporting Guidance for Public Bodies](#)

TRACK - MEASURE - MONITOR: MAP EARLY, MAP OFTEN

- [Score your business site](#) (Checklist Page 34) on pollinator-biodiversity-friendly actions.
- Log [Actions for Pollinators \(GIS\)](#) to layer data for your site over time.
- [Track and measure what's happening to pollinators on your site](#) in a scientifically robust manner e.g., Friday FIT Counts (easy-level App) and Bumblebee Monitoring Scheme (mid-level).
- Manage invasive species via [www.invasives.ie](#)
- Track healthy meadow indicators: [Track/record rare bee orchids on your site](#).

POLLINATOR-FRIENDLY CONSIDERATIONS

Why your business should consider an:

- [ALTERNATIVE action to sowing a wildflower seed mix after earthworks - Page 10](#) - choose a fine-leaved grass mix and then reduced-mowing and lift the cuttings.
- [ALTERNATIVE action to honeybee hives](#).
- [ALTERNATIVE action to sowing/gifting wildflower seed mixes](#). Think carefully by reading [Dr Noeleen Smyth's article on the issues with wildflower seed mixes](#).
- ALTERNATIVE GIFTS include a [Bumblebee poster](#), [herb packets](#) (Page 12), [sunflower seeds](#) (Page 27), or [bulbs](#) (Page 11), or choose from the [TOP TEN guide of pollinator-friendly plants for different situations](#).

Invite colleagues, Biodiversity Champions and your Green Team to sign up for the AIPP free monthly newsletter



The National Biodiversity Data Centre is a Company Limited by Guarantee with Charity status.
Registered Charity Number: 20206927

National Biodiversity Data Centre, SETU West Campus, Carriganore, Waterford, Ireland, X91PE03

Want to change how you receive these emails?

You can [update your preferences](#) or [unsubscribe from this list](#).