

[View this email in your browser](#)



## Business Supporters Newsletter: October 2025

Dear All

We are delighted to welcome the following companies/ organizations as business supporters of the All-Ireland Pollinator Plan (AIPP): Dromoland Castle Resort.

### October 2025's newsletter includes:

- To spot this month - **Ireland's newest arrival - the Ivy bee**
- To do this month - **grow native trees from seed**
- Sponsor this month - **autumn planting of pollinator friendly bulbs to flower next spring**
- Read - **Ivy: a fantastic plant for pollinators**
- Blog: **Making meadows at St Joseph's Secondary School - how your business might support a local school through sponsorship**
- Read - **New 2026 Intake: BFBI's Nature Strategy Accelerator** (partnering with Deloitte and KPMG teams)
- Pollinator Noticeboard October 2025 - **including blogs, tips, and 2026 ideas as you set your budget.**

### ESG | CSR | BIODIVERSITY | NATURE-POSITIVE

- [Business for Biodiversity \(BFBI\)](#) - explore approaches to nature-positive through the FREE [#Discovery Track of the Nature Strategy Accelerator Programme](#). Avail of webinars, knowledge sharing and Communities of

Practice in relation to CSRD (and VSME). Contact  
[Emer.NiDhuill@businessforbiodiversity.ie](mailto:Emer.NiDhuill@businessforbiodiversity.ie)

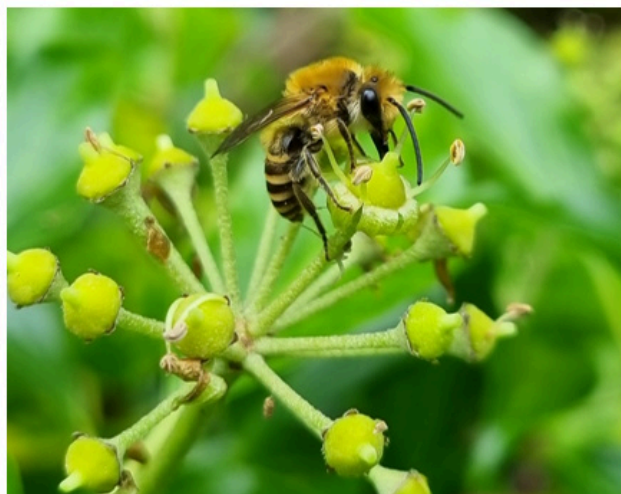
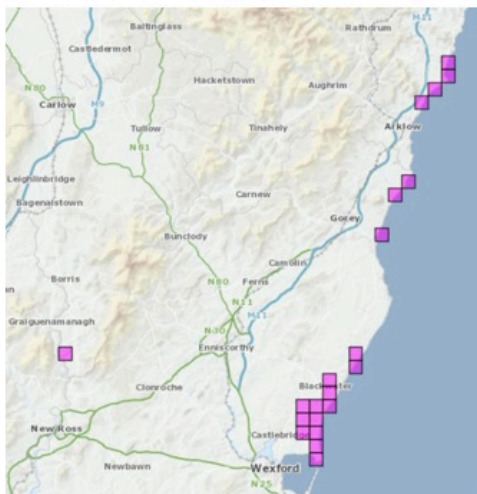
- **Business in the Community Ireland (BITCI)** - explore [BITCI's Business Working Responsibly Mark \("The Mark"\)](#) Ireland's *Environmental, Economic, Social and Governance* (EESG) standard. Third-party verified by the [National Standards Authority of Ireland](#). Now available is [Accelerate - The Business Pact for Climate and Nature](#). Contact Cillian McMahon [CMcMahon@bitc.ie](mailto:CMcMahon@bitc.ie)
- **Business in the Community NI (BITC)** - explore [BITC's Business and Biodiversity Charter](#) Contact Traci.Adams@bitcni.org.uk

## To spot this month: keep an eye out for one of our newest bees

The Ivy Bee (*Colletes hederæ*) was first spotted at the Raven Nature Reserve (Wexford) in October 2021. It's a solitary bee with an autumn flight period, to match the flowering of its favourite plant - Ivy. It nests in south facing banks of light soil. Within the National Biodiversity Data Centre, we've been keeping an eye on its spread each year (current distribution below).

The Ivy Bee is quite large and has very distinctive bands of white on the abdomen. It is likely to be around from mid-September until mid-October. Particularly check in areas along the east and south coasts.

Submit your record if you think you've spotted this bee, and attach a photograph if it's from a new location.

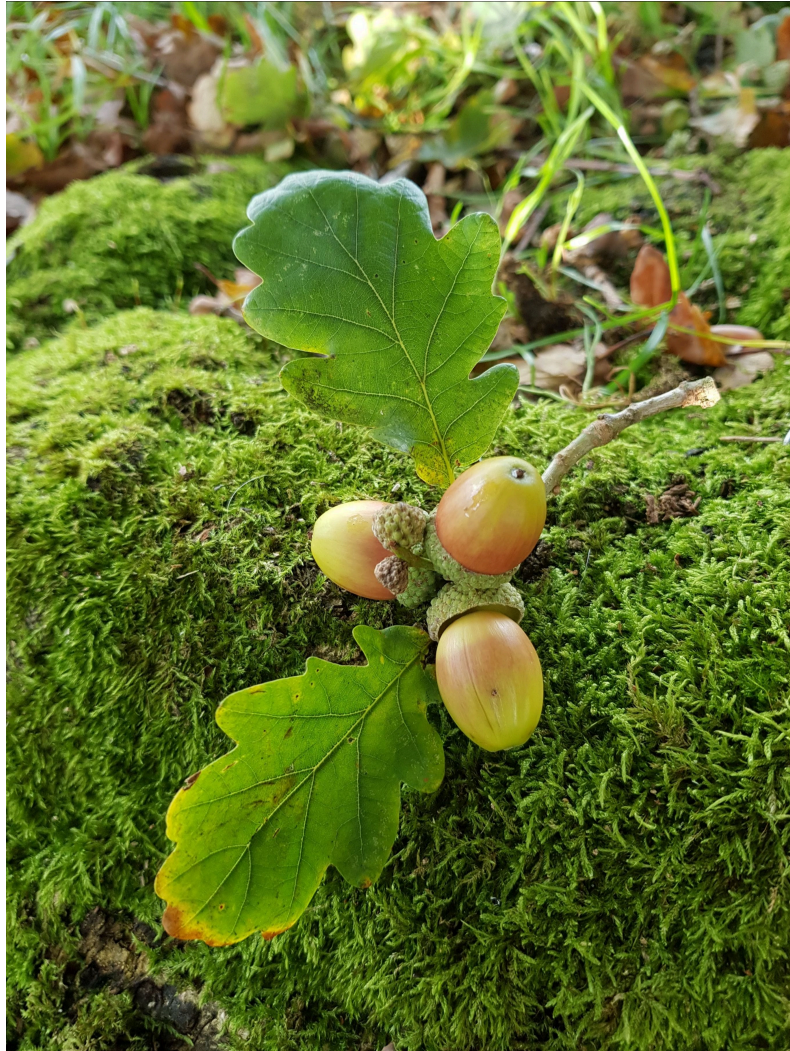


**SUBMIT: Your solitary bee sightings**

## To do this month: grow native trees from seed

Now is the perfect time to collect and plant seeds from our native trees. Good seeds to plant are Rowan, Hawthorn and Elder berries. The flowers from these native trees are a valuable food source for our pollinators in the spring.

Collecting and growing seeds from healthy trees in Ireland is the best way to ensure that local trees can flourish, and gaps are restored with native species. While it doesn't directly support pollinators, Oak is an incredibly important tree for biodiversity. A great action just now is to pick up some acorns if you're out on a walk and find somewhere suitable to plant them locally. PIC: Ruth Wilson



**BLOG: Growing native trees from seed**

**Right tree, right space, right place**

---

## **Sponsor/plant this month: autumn planting of pollinator-friendly bulbs to flower next spring**

We know that pollinators need us to return semi-natural habitats and native plants. However, on business sites, in business parks, in parks and gardens, ornamental flowers that are rich in pollen and nectar can provide additional food for flower-visiting insects.



Early spring is a critical 'hunger gap' for many of our bumblebees and solitary bees. Native species like Willow and Dandelion are vital, but ornamental plants can also help. Bulbs are a great choice as they will come up year after year. Consider adding spring-flowering species like Crocus (pictured) & Grape Hyacinth to your garden. Now is the time to get bulbs planted and pollinators will thank you next spring!



### Top Ten pollinator-friendly bulbs - Page 11

### Sponsoring a biodiversity action in the local community

### FREE ONLINE COURSE: Managing local communities for pollinators

---

## **Ivy - a fantastic plant for pollinators!**

With Autumn upon us, you will see Ivy in flower and buzzing with insects. It's an incredibly important food source for pollinating insects who need to fatten up for hibernation. Learn about why it's so important for all biodiversity in this factsheet, created as part of our 'Biodiversity on your Farm' series. This factsheet information also applies to larger business sites.



## Native Farmland Plants and their Pollinators

The National Biodiversity Data Centre will focus on #10 native farmland plants and their pollinators this year. Our native plants are vital for our farmland pollinating insect species.



### Species # 10: Ivy, *Hedera helix*, Eidhneán



© Ruth Wilson

Ivy flowers in the autumn provide a critical source of pollen and nectar for late flying pollinators.



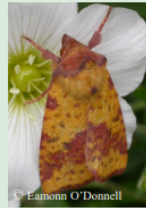
© Ruth Wilson

Such as Buff-tailed bumblebee (*Bombus terrestris*) queens feeding up before hibernation.

The Ivy bee (*Colletes hederace*) feed mainly on ivy and time their emergence to fit in with the flowering period of ivy.



© Steven Falk



© Eamonn O'Donnell

Several moth species that feed on ivy, including the Pink-barred Sallow moth (*Xanthia togata*).



© Ruth Wilson

Following pollination of the flowers, berries develop. They have a high fat content and are enjoyed by many bird species.

Ivy is found in and around hedgerows, old walls, non-farmed areas and woodland edges.

Try our online course on pollinator-friendly farming:  
[Pollinator-friendly farming](https://biodiversityireland.ie/pollinator-friendly-farming)  
([biodiversityireland.ie](https://biodiversityireland.ie))

The National Biodiversity Data Centre is a Company Limited by Guarantee. Register Number: 730718.



## FACTSHEET: Ivy

**CHECK OUT:** other bumblebee favourite food sources at this time of year

**MAINTENANCE:** How-to-guide Hedgerows for pollinators (incl. ivy)

## NEW BLOG: Making meadows at St. Joseph's Secondary School - how you might support through sponsorship

In this guest blog, St Joseph's Secondary School in Castlebar tell us about their excellent work to reduce mowing and create new meadows in the school grounds. Hopefully it'll inspire other schools to consider something similar in 2026!

As a business you might consider providing sponsorship support to the school to cut and lift the cuttings of a short or long flowering area?

Or as a landscape contractor working on school grounds you may be interested in the free online course? Link below.

Also, check out [Biodiversity in Schools](#) for more ideas on how to sponsor/engage with local schools adjacent to your area.



### BLOG: Making Meadow's at St. Joseph's Secondary School

### FREE ONLINE COURSE: Managing school grounds for biodiversity

---

## NEW 2026 INTAKE: BFBI's *Nature Strategy Accelerator*

Business For Biodiversity Ireland (BFBI) has just opened its *Nature Strategy Accelerator Programme* intake for 2026, to support Irish businesses who want to incorporate nature into decision-making. The *Nature Strategy Accelerator Programme* provides:

- a step-by-step roadmap to a credible Nature Strategy
- peer-to-peer learning
- immersive workshops
- curated resources and frameworks
- one-on-one guidance with our expert team
- networking opportunities
- and, all-employee-training-webinars to get your entire workforce up to speed on why biodiversity is everyone's business.

BFBI, a not-for-profit supported by National Parks and Wildlife Service (NPWS), is partnering with leading experts at [Business for Nature](#), [Deloitte's #WorldClimate](#) and [KPMG](#) Ireland

**#SustainableFutures** teams, and, the **National Biodiversity Data Centre** to raise capacity in Irish businesses and ensure Ireland is leading the way to a Nature Positive Economy.

The *Nature Strategy Accelerator Programme* is tailored to the Irish market, with fees aligned with existing grants, allows you to progress at your own pace to future-proof your organisation and act **#NowForNature**.

Read BFBI's new brochure [on their site](#) with testimonials from BFBI member businesses such as: **ESB Networks**, **SAP Landscapes**, **Iarnród Éireann Irish Rail** and **#ShannonAirport** Group on the benefits of working with BFBI on a Nature Strategy.

Read more/sign up at the link below or contact Dr Maria Fitzpatrick BFBI Business Development Manager ([manager@businessforbiodiversity.ie](mailto:manager@businessforbiodiversity.ie)) to discuss next steps **#ForNature** along the individual and uniquely tailored Tracks - **#Discovery**, **#Action**, **#Strategy** and **#Evolution**.



The graphic features the title "Nature Strategy Accelerator Programme" in orange. Below it, four colored shapes represent the tracks: a yellow shape for "DISCOVERY" (with a rabbit icon), an orange shape for "ACTION" (with a hand icon), a blue shape for "STRATEGY" (with a brain icon), and a green shape for "EVOLUTION" (with a butterfly icon). These are connected by a winding path with arrows. To the right, a QR code is shown with the text "Register for free!" and an arrow pointing to it. At the bottom left, it says "Join the Discovery Track for free and get started on your journey to nature positive." At the bottom right is the Business for Biodiversity Ireland logo.

**READ MORE/ SIGN UP: Business for Biodiversity Ireland 'Nature Strategy Accelerator Programme'**

## POLLINATOR NOTICEBOARD: October 2025

### RESOURCES - BLOGS - WEBINARS - EVENTS etc.

- [How to Plan for Pollinators in Q4.](#)
- [Setting a biodiversity budget for 2026 - Plan for Pollinators.](#)

### WHERE TO START ON YOUR POLLINATOR-BIODIVERSITY JOURNEY & HOW TO COMMUNICATE

- START with the biodiversity action Checklist on [Page 34 Businesses: actions to help pollinators.](#)
- Not sure what biodiversity is on your site? Run a [Biodiversity Maps](#) report (down to 1km2).
- Check out which of your business neighbours are delivering [Actions for Pollinators.](#)



- Review your Local Biodiversity Action Plan (LBAP) - [Action for Biodiversity](#) and speak to your local [Biodiversity Officer](#) about increasing your engagement..
- Nominate a Biodiversity Champions and create a Green Team. Invite them to sign up to the [AIPP business supporters monthly newsletter](#) and connect through socials - Instagram @allirelandpollinatorplan and Twitter/X @PollinatorPlan
- **Communicate what you are doing** by aligning with the [All-Ireland Pollinator Plan Key Campaigns and Messages 2025](#).
- Learn more about pollinators-biodiversity with [free online courses](#).

## POLLINATOR-FRIENDLY MAINTENANCE GUIDELINES

- **Planting & Maintenance:** [Top Ten Guide](#), [Pollinator-friendly planting code](#), [Planting/Management on New Construction Developments](#) (A Cluid guide). Biodiversity actions endorsed by the AIPP.
- [Native hedgerows](#), [Nesting habitat](#), [Orchards](#).
- [Reduced mowing/ meadows](#) and verges (and lift the cuttings!).
- [Solar Farms](#), [Wind Farms](#), [Healthcare sites](#).

## POLLINATOR-FRIENDLY CONSIDERATIONS

Why your business should consider an:

- [ALTERNATIVE action to sowing a wildflower seed mix after earthworks - Page 10](#) - choose a fine-leaved grass mix and then reduced-mowing and lift the cuttings.
- [ALTERNATIVE action to honeybee hives](#).
- [ALTERNATIVE action to sowing/gifting wildflower seed mixes](#). Think carefully by reading [Dr Noeleen Smyth's article](#) on the issues with wildflower seed mixes.
- ALTERNATIVE employee/client gifts such as a [Bumblebee poster](#), [herb packets](#) (Page 12), [sunflower seeds](#) (Page 27), or [bulbs](#) (Page 11), or choose from the [TOP TEN guide of pollinator-friendly plants](#) for different situations.

## POLLINATOR-FRIENDLY IDEAS

- [Create \\*thematic\\* places for pollinators - sensory, herb, rain or moon garden/planter as part of a biodiversity walking trail?](#)
- [Raise awareness in your value chain](#) including [Client engagement for pollinators](#).
- Identify AIPP pollinator-friendly [procurement \(tendering/specifying\) and sponsorship](#).
- Score how [pollinator-friendly your car park](#) is (Page 31).
- Develop an [ecological corridor](#) with business neighbours in your [business/technology park](#).
- **Geographic-based local actions:** [Large Carder Bee - coastal areas across the island](#), [Shrill Carder Bee - Roscommon, South Galway or The Burren](#)), [Great Yellow Bumblebee - Mullet Peninsula/ Belmullet, Co. Mayo](#).

## TRACK - MEASURE - MONITOR: MAP EARLY, MAP OFTEN

- Engage your [value chain with AIPP evidence-based actions](#) and set simple SMART targets.
- [Score your business site](#) (Checklist Page 34-35) on pollinator-biodiversity-friendly actions.
- Add pollinator-biodiversity actions to [Actions for Pollinators \(GIS\)](#) to layer data over time.
- Identify which biodiversity is on or 'adjacent' to your site via [Biodiversity Maps](#).
- [Track and measure what's happening to pollinators on your site](#) in a scientifically robust manner e.g., Friday FIT Counts (easy level, via App) and Bumblebee Monitoring Scheme (intermediate level).



- Map, track and manage invasive species via [www.invasives.ie](http://www.invasives.ie)
  - Healthy meadow indicators: [Track/record rare bee orchids on your site](#).
- 

**Invite your Green Team, Biodiversity/Sustainability Champions & colleagues to sign up to the AIPP monthly business supporters newsletter**



The National Biodiversity Data Centre is a Company Limited by Guarantee. Register Number: 730718.

National Biodiversity Data Centre, SETU West Campus, Carriganore, Waterford, Ireland, X91PE03

Want to change how you receive these emails?

You can [update your preferences](#) or [unsubscribe from this list](#).