

Case Study



CARBERY

Carbery Group is a manufacturer of food ingredients, flavours and award-winning cheese. Carbery is located in Ballineen, west Cork and is owned by four Irish dairy co-operatives comprising 1,180 farmers. Carbery uses milk produced from pasture-fed cows, providing customers with a natural source of dairy products.

Carbery is committed to both protecting and enhancing biodiversity through its operations and with their farm suppliers.

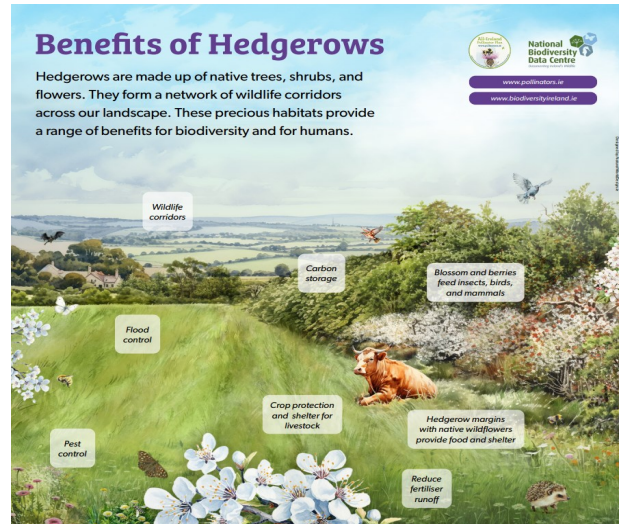


An initiative by
BORD BIA
IRISH FOOD BOARD



PIC: Laura Bogue

Balineen employees distributing pollinator-friendly garden plants



‘This year Carbery Group planted a native hedgerow adjacent to the factory, which provides an essential habitat and food sources for wildlife. The 4th phase of the Carbery Trees project was also rolled out, with over 135k native trees of local provenance planted.

Carbery also engaged with employees on nature-positive initiatives during *Biodiversity Week*. These included staff distributing pollinator-friendly garden plants, an ecologist-led biodiversity talk, and a Biodiversity Photo competition.’

**Laura Bogue European ESG Lead,
Carbery**

Future Plans:

In the coming year Carbery Group proposes to create a Biodiversity Map of the Balineen Carbery site and also help a selection of farm suppliers to do the same on their land. Carbery also plans to provide advice to farmers on best practices for farm hedgerow management and advice regarding on-farm riparian buffer zones.



www.pollinators.ie



National Biodiversity Data Centre
Documenting Ireland's Wildlife



In line with the AIPP evidence-based ' Businesses: actions to help pollinators' guidelines , Carbery Group has delivered the following actions:	Evidence-based Action delivered:
Carbery Group participates, and will continue to participate, in No Mow May.	Action 5 Create a short-flowering meadow Action 6 Create a long-flowering meadow (reduced mowing & lift cuttings)
The 4th phase of Carbery Trees rolled out 30k trees (native whitethorn & birch) 135,000 trees in total as part of the Carbery Trees project.	Action 8 Plant native, local provenance, pollinator-friendly trees and shrubs
Native hedge was planted along the main road to the Carbery factory.	Action 7 Maintain or plant a native flowering hedgerow
<ul style="list-style-type: none"> • All employees received a variety of bee friendly plants in May. • Biodiversity Photo Competition as part of <i>Biodiversity Week</i>. • Carbery Trees project leaflet distribution around tree planting best practice. • Biodiversity talk with Ecologist Claire Deasy in May. 	Action 26 Promote the All-Ireland Pollinator Plan to employees on a monthly basis

AIPP Page Reference: [Resources for Business » All-Ireland Pollinator Plan \(pollinators.ie\)](#):

Actions 5 & 6: Page 9 & 10

Action 8: Page 13

Action 7: Page 12

Action 26: Page 26

