

[View this email in your browser](#)



Business Supporters Newsletter: January 2024

The [All-Ireland Pollinator Plan](#) (AIPP) is a framework bringing together different sectors across the island of Ireland to create a landscape where pollinators can thrive. Implementation of the AIPP is coordinated by the [National Biodiversity Data Centre](#).

Dear All

We are delighted to welcome the following companies/organizations as business supporters of the All-Ireland Pollinator Plan: Etex Ireland Ltd., Roadstone Ltd. and Toyota Logistics.

Re-signs include: Adare Manor Golf Resort, Applegreen (Petrogas Group), Domestic and General Property Services, Galway Business School/Galway Cultural Institute, Tureen Landscapes and Vyra.

For businesses keen to explore the emerging nature/biodiversity reporting structures and types of approaches to consider, check out the government-backed national platform [Business for Biodiversity Ireland](#) which is now 'live'. The platform will be [providing webinars, knowledge and learning](#) opportunities in the years to come.

Sarah Kelly
Agri/Business officer

WILD BEE WATCH: keep an eye out for winter bumblebees

January is still a quiet month for sightings. The normal lifecycle of most Irish bumblebees ends when the workers and males die off and the newly mated queens hibernate through the cold winter months. However, in recent years, the Buff-tailed bumblebee (*Bombus terrestris*) has been seen foraging during winter months in both Ireland and in southern Britain. It is not known whether these bumblebees are able to successfully breed in winter. You can help improve our understanding by letting us know if you spot winter-active bumblebee workers. PIC: Ciaran Taylor

You can submit your individual bumblebee sightings through the link below. However if you are Interested in a more formal, scientific tracking mechanism for bumblebees on your business site (suitable for non ecologists) then check out the [Bumblebee Monitoring Scheme](#).



SUBMIT: bumblebee sightings

TO DO THIS MONTH: consider planting a new hedgerow

Planting a diverse native hedgerow and managing it for biodiversity is one of the best actions you can take to help pollinators. The planting window is from November to February. Within the National Biodiversity Data Centre, we have published a short flyer on how to plant a new hedgerow. NOTE:

Ongoing [management of the hedgerow](#) should also be considered, as part of your Biodiversity Plan, as food for pollinators grows on older wood. Also, retain bramble and ivy as food sources in late summer and early autumn. If your business site is adjacent to farmland, consider working with your farmer neighbour to enhance the bordering hedgerow.

How to plant a Hedgerow for biodiversity

Protecting Farmland Pollinators National Biodiversity Data Centre

Good quality hedgerows provide the four essential needs of biodiversity:

- Sources of food: pollen, nectar, fruits
- Places to breed
- Places to nest and overwinter
- Corridors to travel across the landscape

What should you plant?

- Plant a diverse range of species, with no more than 70% of one species. Allow one tree to grow for every ten hedgerow plants.
- Use native plants of Irish provenance. These are best for biodiversity, and will help stop the import and spread of pests and disease.

Native hedgerow species

	
Blackthorn	Dog Rose
	
Guelder Rose	Hawthorn/Whitethorn
	
Holly	Hazel
	
Honeysuckle	Spindle

The species listed above can all be regularly cut or managed in a hedgerow.

Don't use cultivated varieties

Trees in a hedgerow: the following native species can be planted to grow into a tree - Blackthorn, Hawthorn/Whitethorn, Holly, Crab Apple, Goat Willow, Grey Willow, Pendunculate Oak, Rowan, Sessile Oak and Wild Cherry.

Where to plant your hedgerow

Connecting the new hedgerow with existing habitats will make it easier for pollinators and other wildlife to get to and from your new hedge safely.

How to plant your hedgerow

- 1 Cultivate the ground for ease of planting.
- 2 Plant a double row of two-year old bare-rooted whips in a zig zag pattern (see diagram).
- 3 Protect roots from drying out during planting.
- 4 Plant to the root collar, ensuring roots are not exposed and gently firm into the soil.
- 5 Protect from grazing animals.
- 6 Put a guard on plants that will become trees.
- 7 Prune all other plants (except Holly) to 10cm immediately after planting. Pruning will result in multiple new stems and a dense hedgerow.

40cm between plants

40cm between plants

Farmer tips:

- Plant from November to February. If concerned about rabbit damage, plant in February.
- Many of our unmanaged relict hedgerows have disappeared. If you want to plant a new hedgerow and tree species, in this case, don't prune, and weeds can be kept under control by trampling.

Prune after planting

Weed management - necessary for 2-3 years:

- Use a natural mulch e.g., sheep's wool, wet newspaper, plant-based compostable film, well-rotted leaf mould or bark chips.
- Alternatively, weed by hand.
- Avoid herbicides.

www.pollinators.ie
www.biodiversityireland.ie

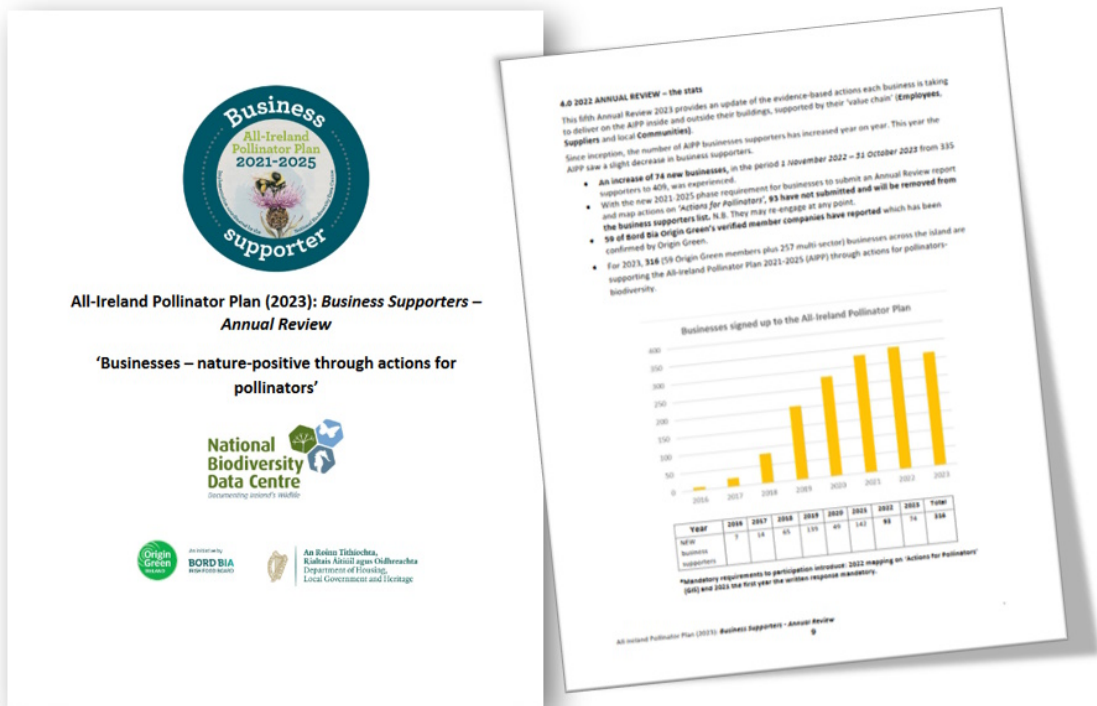
DOWNLOAD: hedgerow flyer

PUBLISHED: Business Supporters - Annual Review 2023

We are delighted to publish this year's 'All-Ireland Pollinator Plan (2023): Business Supporters – Annual Review'. All business supporters were invited to submit a mandatory 250-word report PLUS map their evidence-based actions delivered on 'Actions for Pollinators' (GIS) – the biodiversity-accountability portal.

We are thrilled with the evidence-based actions delivered by businesses this year. And, as ever, there is lots more to do. 316 businesses have responded on their actions for pollinators in 2023 and are featured in this report.

Watch out in next month's Business Supporters newsletter for the updated *Business: actions to help pollinators guidelines*.



[READ & DOWNLOAD HERE](#)

NEW ILLUSTRATION: the importance of hedgerows

The National Biodiversity Data Centre and the All-Ireland Pollinator Plan are delighted to release a new illustration on the importance of hedgerows. Hedgerows are important to both humans and biodiversity, providing food (such as blossom and berries), creating crucial wildlife corridors, storing carbon, and helping mitigate fertilizer run-off. Share these new resources with your employees.



READ & DOWNLOAD THE ILLUSTRATION HERE

No Mow May 2024 - can you help by sharing your experiences, pics and 'reels'

Did your business participate in No Mow May? Even better, does your business mow less all year round? As part of our 2024 No Mow May campaign, we're inviting you to share your No Mow May story.

What we'd love to know is:

- Which plants appeared?
- Did more pollinators visit as a result of participation?
- Were you unsure about taking part? If so, what convinced you?
- Have you developed a Reduced Mowing/No Mow May Policy which your business can progress?

We want to share some of your stories on our website and social media platforms later this year, to inspire others to mow less and join the buzz to save the bees. If you'd like to take part, please send your No Mow May story (and photos/reels, if you have them), to Kate Chandler kchandler@biodiversityireland.ie. Remember to credit the pic or reel in your email.

#NoMow May

Red clover

Don't mow, let it grow
Join the buzz to save the bees
www.pollinators.ie



POLLINATOR/BIODIVERSITY PLANNING FOR THIS YEAR? Check

www.pollinators.ie for evidence-based actions

When planning your pollinator-biodiversity actions for 2024 (including sponsorship) don't forget to use the [Resources](#) section of pollinators.ie to check your actions are evidence-based.

- Whether it's [planning to plant](#), [mowing less in grassy areas](#), [pollinator-friendly hedgerow management](#), or [native trees](#) or (mini) [orchards](#), check in with pollinators.ie.
- Thinking about a [sensory garden](#), a [moon garden](#) (Page 9), a [car park](#) upgrade or a [Biodiversity Walking Trail](#) (Page 27)? Or thinking of going [solar](#) or catching the [wind](#)? Check in with pollinators.ie.
- Promoting nature in the context of health and wellbeing for employees? Check in with [FAQs for business on pollinators.ie](#) and '[Pledge Your Garden](#)'.
- Wanting to engage employees and your Green Team in nature-related, scientifically robust monitoring projects? Check out the simple weekly [Flower Insect Timed \(FIT\) Counts](#) and a little more challenging (but very do-able as a non-ecologist) monthly [Bumblebee Monitoring Scheme](#).
- Looking for a specific pollinator to focus on which you might attract to your site? Check out the simple actions for the rare and beautiful [Large Carder Bee](#) guidelines and where it has already been [spotted](#).
- And remember, don't go changing what's already great. If you're not sure, commission a baseline ecological survey through the [Chartered Institute of Ecology and Environmental](#)

Management (include the *National Pollinator Monitoring Methodology and repeat every 5 years*) and ask them to help you create a Pollinator-Biodiversity Plan suitable for your site.

- Not sure where to find the information? Email Sarah Kelly skelly@biodiversityireland.ie

All-Ireland Pollinator Plan

The All-Ireland Pollinator Plan is a framework bringing together different sectors across the island of Ireland to create a landscape where pollinators can survive and thrive. It is implemented by the National Biodiversity Data Centre.

One third of our wild bee species is threatened with extinction. This is mainly because we have drastically reduced the amount of food and safe nesting sites that support them. The All-Ireland Pollinator Plan is a shared plan of action: together, we can take steps to restore pollinator populations to healthy levels.

There are simple ways everyone can help, whether you have a business, a farm, a community group, a garden, or a window box. On this website you will find information about our work and campaigns, and free resources to help you learn more about our different pollinators and what you can do to help them.

NEW: All-Ireland Pollinator Plan 2021-2025

Progress: All-Ireland Pollinator Plan 2015-2020

Farmland

Councils

Businesses

Communities

Sports Clubs

Transport Corridors

Schools & Campuses

Gardens

Site-specific guidelines

Helping endangered pollinators

Faith Communities

National Initiative Toolkit

Pollinator Research

Top ten actions for pollinators

Add your actions to our map

Flower-Insect Timed (FIT) Count

Pledge your garden for pollinators

The Buzz

The Problem With Wildflower Seed Mixes
Find out why we don't recommend sowing wildflower seed mixes, and how they can do more harm than good to biodiversity. [Details](#)

January Pollinator Plan newsletter
Review of what has happened in 2023, new hedgerow resources. Lots of news in our latest issue [Details](#)

Create a natural wildflower meadow
Don't Mow, Let it Grow! Pollinators don't want you to plant wildflower seed - they want you to allow common wildflowers to grow naturally. Learn how by watching these videos [Details](#)

Bumblebee Identification: A Free Online Course
Learn to identify our 6 most common bumblebees. There are activities and quizzes to test your progress and get feedback on answers. [Details](#)

Twitter feed is not available at the moment.

SUBSCRIBE TO THE MAIN NEWSLETTER HERE



The National Biodiversity Data Centre is a Company Limited by Guarantee. Register Number: 730718.

National Biodiversity Data Centre, SETU West Campus, Carriganore, Waterford, Ireland, X91PE03

Want to change how you receive these emails?
You can [update your preferences](#) or [unsubscribe from this list](#).