

[View this email in your browser](#)



Business Supporters Newsletter: March 2023

The [All-Ireland Pollinator Plan](#) is a framework bringing together different sectors across the island of Ireland to create a landscape where pollinators can survive and thrive. Its implementation is coordinated by the [National Biodiversity Data Centre](#).

Dear All

We are delighted to welcome the following companies/organizations as business supporters of the AIPP.

New Business Supporters include: FSW Coatings Ltd. (Fleetwood Paints), First Ireland Spirits, Cemcor Ltd., Horticultural Therapy Ireland, Eli Lilly Kinsale Ltd., Jubilee Coop, Grid Finance Impact Ltd., plus we are delighted to confirm that W39 Services have re-committed in 2023.

Impacts & Dependencies - AIPP an entry-level to biodiversity on any site

In the language of biodiversity we often talk of 'impacts' and 'dependencies'.

Simply put - we are '*dependent*' on pollinators (wild bees) for pollination of crops, trees, flowers etc. and we know we can have an almost immediate '*impact*' on their environment by delivering AIPP evidence-based actions. We also know that as we start taking action for pollinators, we are impacting on wider biodiversity.

So, don't overthink what your company might do for biodiversity. Focus on pollinators first, an entry (which can be cost-neutral or low cost) and then add other biodiversity year on year.

Mapping Actions

A huge THANK YOU to all businesses who have mapped evidence-based actions on our GIS '[Actions for Pollinators](#)' - biodiversity-accountability mapping portal. Mapping actions is now MANDATORY and it is part of the requirement for participation in AIPP. N.B.

No physical site? No problem; there are lots of communication actions in which you can participate.

Delivering physical actions for a third party? If you have permission from the landowner (re GIS mapping), map what you are doing on their site. OR You can list what you are planting on their site as a communication action.

Sarah Kelly

Agri-business Officer

*The All-Ireland Pollinator Plan 2021-2025, co-ordinated by the National Biodiversity Data Centre, actively addresses the time-critical pollinator-biodiversity challenge. It is a shared plan of action for the island now in its seventh year, which builds on the targets within The EU 2030 Biodiversity Strategy, Ireland's National Biodiversity Action Plan 2017-2021 (Objective 4) and is mentioned in Northern Ireland's Biodiversity Plan to 2020, to halt and reverse pollinator decline by 2030. It responds to the Irish Government's 2019 Biodiversity Emergency Declaration which happened alongside the Climate Declaration. It is also aligned with Bord Bia's Origin Green programme with reference to 'pollinator actions', and, supports members' biodiversity targets.

Thanks to the funders of the Agri-business Officer position: Bord Bia Origin Green's food sustainability programme and Business for Biodiversity Ireland, Ireland's new biodiversity hub.

BEE WATCH: keep an eye out for the Hairy-footed Flower Bee

The first Irish record of the Hairy-footed Flower Bee (*Anthophora plumipes*) was made last March in Harold's Cross, Dublin. It is a large solitary bee, but can look like a bumblebee. The males and females are very different to each other. The female resembles a small black bumblebee with distinctive orange hairs on the hind leg. In Britain, it shows a preference for Lungwort. Males have light brown/ginger hairs all over their body and cream markings on their face. They also have distinctive long orange hairs on their middle legs and feet, which is where the species gets its name. Their quick darting flight motion is a good way to tell them apart from bumblebees. Currently it is only known from the original sightings in Harold's Cross in 2022. Keep an eye out and email a photo to ufitzpatrick@biodiversityireland.ie (Dr Úna FitzPatrick) if you think you find any new populations this spring! PICS: Martin Molloy.



Submit your solitary bee sightings

**TO DO THIS MONTH: check out which foods wild bees
preferred in 2022**

Every year, the *National Biodiversity Data Centre* receives thousands of bee sightings. In 2022, 1,482 bee records were submitted, that included information about what the bee was feeding on. This gives us a clear sense of which flowers they prefer.

This year's data again shows the importance of native plants, and of simple actions like [Don't mow, let it grow!](#) (guideline). Click the link below to read more, including which plants are key each month, and what simple actions you can take to ensure your business site(s) provide their favourite foods!

Here are the Top 10 favourite food for bees in 2022, in order of the number of sightings submitted:

1. **Dandelion** (more than double the number of sightings of Knapweed!)
2. Knapweed
3. Clovers (Red & White)
4. Heather (garden and native)
5. Thistles
6. Bush Vetch
7. Lavender
8. Devil's-bit-Scabious
9. Bramble
10. Willow

PIC: Liam Lysaght



[Read more](#)

LOOK WHO'S TALKING: SUPPLIERS

What do AIPP Comms Actions for business look like in 2023 across the 'value chain'?

When referring to biodiversity we talk about 'dependencies' and 'impacts'.

We are '**dependent**' on pollinators (for pollination) - our 100 wild bee species on this island are struggling to survive - AND we can have an almost immediate '**impact**' by taking *AIPP evidence-based actions* - an

entry-level into biodiversity on any site. We also know that as we take evidence-based actions for pollinators we impact on wider biodiversity.

Biodiversity Actions, Monitoring & Measurement

Consider AIPP in the context of delivery on (if applicable) the Corporate Sustainability Reporting Directive (CSRD), and the Taskforce on Nature Related Financial Disclosures.

Your SUPPLIERS - consider simple SMART targets such as:

- Have you sent your suppliers the AIPP Business Guidelines.- how many?
- Have you sent suppliers the specific sectoral guidelines? e.g. Wind Farms or Farmland. If so, how many? N.B. Housing Guidelines will be issued in the coming months.
- Are suppliers signed up to AIPP as an evidence-based biodiversity initiative - how many currently?
- How many suppliers will you endeavour to encourage to sign up in 2023? How many? Percentage change?
- How many suppliers are, reporting, and mapping evidence-based actions on the AIPP GIS system 'Actions for Pollinators'? How many? Percentage change?
- If suppliers are adjacent to your business site – how are you creating 'connected habitat'? Is that habitat linear (e.g. Native tree line or Native hedgerow).

PROCUREMENT/BUYING

- Can you include the AIPP within any tenders you issue?
- Is your land managed by a Landscape Contractor/Grounds Maintenance company? Have they signed up *and are they following* the AIPP evidence-based guidelines - including: (i) Don't Mow Let it Grow to create natural wildflower areas (as opposed to sowing wildflower seed and potential impact of invasive species on agricultural land) (ii) Elimination of pesticides/herbicides/insecticides where possible - including Pesticide-free bulbs/shrubs/trees (iii) Use of Peat-free compost (iv) Ensuring Irish Provenance of native trees (v) specific pollinator-friendly planting.
- **THINK TWICE/choose an alternative action** - please avoid honeybee hives/development of an apiary. Honeybees are a managed pollinator, not under threat and may create competition for food for the island's 100 wild bee species. To have honeybee hives is NOT a biodiversity action. Honeybee hives are wonderful as a hobby and if you already have hives - please don't increase numbers. Always seek expert advice from your local beekeeping association if considering.

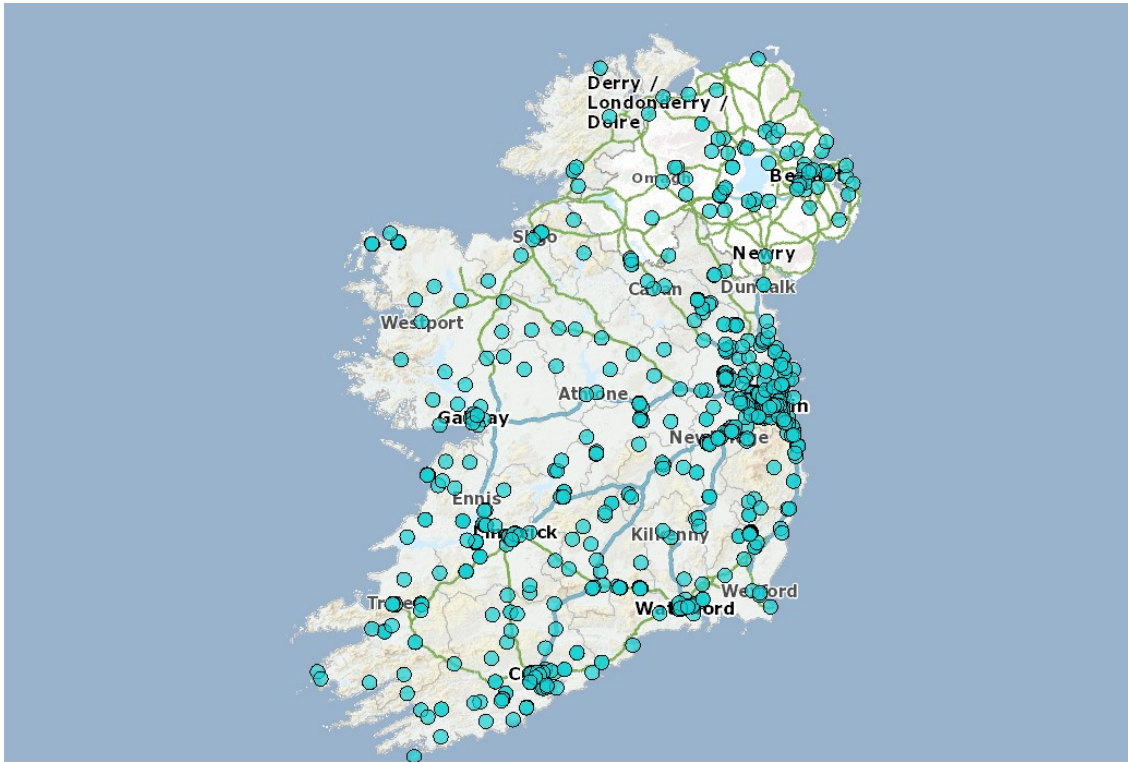


'Actions for Pollinators' - GIS biodiversity accountability portal

A huge thank you to those actively mapping on our '[Actions for Pollinators](#)' GIS portal - now mandatory as an AIPP Business Supporter - we really appreciate it.

A reminder of things to consider:

- REPEATING ACTIONS IN 2023? You must click 'SUBMIT' on actions EACH year – even if repeating the same site actions as last year.
- 2022 submitted actions will still be visible on your 'Actions for Pollinators' account. Edit/overwrite last year's actions with 2023's actions; then CLICK 'SUBMIT'.
- NAMING PROTOCOL: list company name first. *e.g. Company X – pollinator friendly planting.*
- PLEASE provide m2 or linear metres where possible.
- PLEASE ensure you are specifying/reporting on pollinator-friendly species. [REVIEW on our Resources page.](#)
- Is your business developing a garden? OR is your business managing residential gardens as part of an asset portfolio? Please list the sector as a 'Business' and then name as *e.g. Company X (Garden/Green Lane Residential Dev.) – Pollinator friendly planting.*
- Does your company manage assets for a third party? Please invite clients to map pollinator-friendly actions as part of their sustainability/biodiversity reporting.
- Are you a participant in the DCs for Bees/orchards initiative via Host in Ireland? Please list as *e.g. Company X (DCs for Bees) Orchards 2023.*
- Have you limited land footprint or a Micro-enterprise? Please map your Comms Actions *e.g. engagement with Twitter @PollinatorPlan or Instagram @allirelandpollinatorplan*



WEBINAR DATE FOR YOUR DIARY (Agri-business)

Origin Green 'Pathways to Biodiversity'

Processor actions to support farm-suppliers

Origin Green, Bord Bia's food sustainability programme, in conjunction with the All-Ireland Pollinator Plan (AIPP) will be hosting the next 'Pathways to Biodiversity' webinars on:

Wednesday 26 April 2023, 1000-1100.

The webinar will focus on how processors are interacting with farm-suppliers (value chain/growers) to support them in taking actions for pollinators and wider biodiversity. Event registration will be available in the next AIPP Business Supporters newsletter.



An initiative by

BORD BIA
IRISH FOOD BOARD

AIPP 2023 Comms - abridged version

Is your business' Marketing Team considering a pollinator campaign to mirror evidence-based physical actions your business is taking on site e.g. [Don't Mow Let it Grow](#) or No Mow May?

Why not tie in with the relevant AIPP Key Messages & Campaigns 2023 (including hashtags for socials) in the link below?

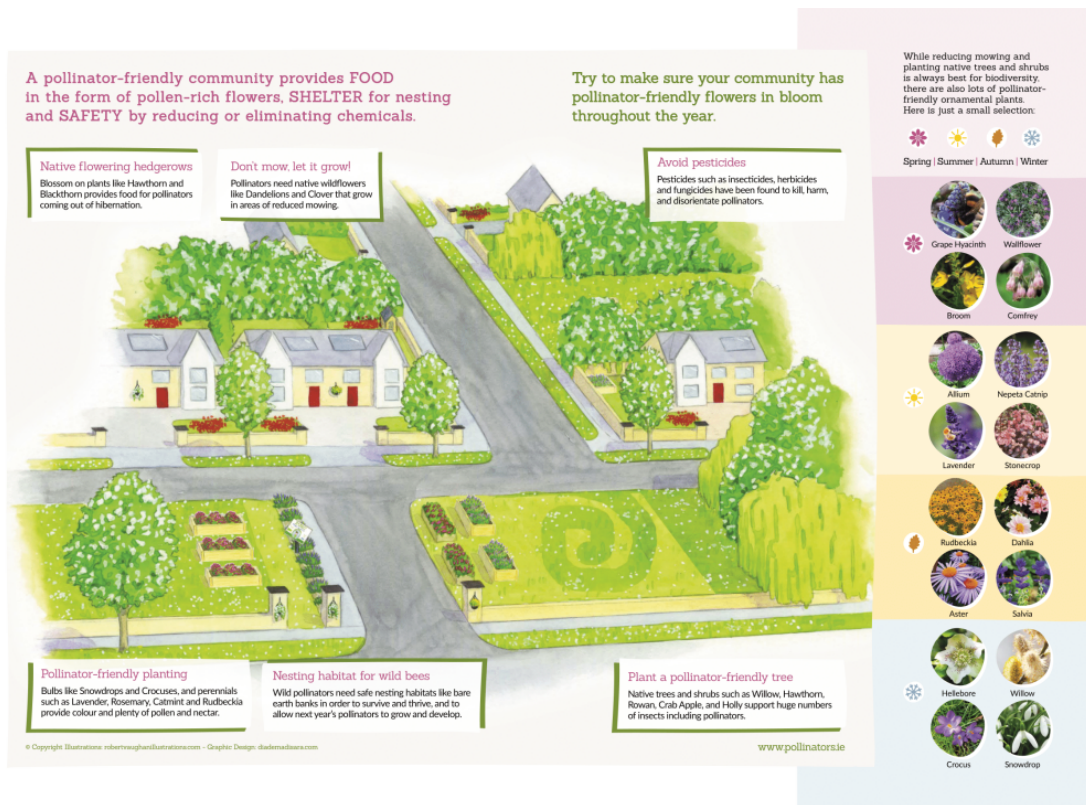


[Read more](#)

NEW RESOURCE: Residents' Associations actions for pollinators

Is your business sponsoring a pollinator project with a local Residents' Association?

We are delighted to release a new short booklet with guidance on how Residents' Associations can help pollinators. The booklet includes a list of top ten actions for pollinators, details of common species to spot, and a calendar of flowers that will provide colour and pollen across the year. Click on the link below to read more and download the booklet.



[Read more](#)

NEW RESEARCH: shows that too many honey bees can threaten wild bees

Researchers in Canada have found that too many honey bee hives can negatively impact wild bee species richness by outcompeting them for floral resources (food). They also found that solitary bees are at higher risk as they don't have the ability to forage long distances in times of increased competition. They call for cities to maintain a registry of beekeepers with hive locations, so we can develop a better understanding of hive densities, locations, and the honey bee colony carrying capacities of city greenspaces. The author of the research has written a blog ([link below](#)) for the AIPP to summarise the findings of their paper.



Blog - Dispatches from Researchers

Pollinator Workshop: check out the just published 2023 workshops

Are employees in your business interested in becoming more involved in pollinator identification and monitoring? Check out the workshops from the *National Biodiversity Data Centre* for 2023 by clicking the link below the picture.

OR are they just looking for an online course as part of biodiversity CPD? Check out the free courses [HERE](#).



[Read more](#)

FAITH COMMUNITIES: helping pollinators

Are the employees in your business actively involved in their faith community?

Carmel O'Neill has provided us with a lovely blog to summarise the excellent work carried out at Our Lady of Mount Carmel Church in Lacken, Co. Wicklow. To read more click on the link below. We thank everyone, across all sectors, who are taking actions for pollinators and helping create a landscape where they can survive and thrive.



Harvesting yellow rattle seeds (Pic: Carmel O'Neill)

[Read more](#)

VOLUNTEERS NEEDED: Bumblebee Monitoring Scheme 2023

Within the *National Biodiversity Data Centre*, we have been monitoring bumblebees since 2012, through a citizen science scheme called the Bumblebee Monitoring Scheme. Volunteers within this scheme walk a fixed ~1km route once a month from March to October and count the number of different bumblebees they spot. Beginners are very welcome, but the scheme does require a time commitment in learning how to identify the different bee species. This scheme has been slowly building through our amazing volunteers, but we still need to add another 20 walks over the coming years. March is the best time for beginners to join, as in early spring there will be fewer different species for you to learn to identify. If interested in becoming a volunteer, you can take our free course in identifying bumblebees which also explains how the scheme works: <https://biodiversityireland.ie/identifying-irish-bumblebees/lesson.html>

On an island scale, the scheme helps us understand if bumblebees are increasing or declining. At site levels, it's a great way to assess the impact of actions you are taking in support of the Pollinator Plan. If you decide you'd like to give it a try, please email [Dr Una FitzPatrick](mailto:DrUnaFitzPatrick@biodiversityireland.ie) ufitzpatrick@biodiversityireland.ie so that she can add you to the mailing list to receive the Monitoring Scheme monthly newsletter with hints and tips.

How To Identify and Record Common Irish Bumblebees

Menu

- ▼ 1. Course Welcome and Introduction
 - 1.1. How to Identify and Record Common Irish Bumblebees
 - 1.2. Welcome
 - 1.3. Course structure
 - 1.4. Course structure ...continued
 - 1.5. Navigating the course
- ▶ 2. Bumblebee Biology
- ▶ 3. Identifying Common Bumblebees
- ▶ 4. Recording and Monitoring
- ▶ 5. Background to the Bumblebee Monitoring Scheme
- ▶ 6. References and Acknowledgements

What's That Buzz?

How to Identify and Record Common Irish Bumblebees



Common carder bee



Buff-tailed bumblebee



Red-tailed bumblebee



White-tailed bumblebee



Early bumblebee



Garden bumblebee





Click NEXT to continue

©Elizabeth Gabbett 2020

Bumblebee Monitoring Scheme website



The National Biodiversity Data Centre is a Company Limited by Guarantee. Register Number: 730718.

National Biodiversity Data Centre, SETU West Campus, Carriganore, Waterford, Ireland, X91PE03

Want to change how you receive these emails?
 You can [update your preferences](#) or [unsubscribe from this list](#).