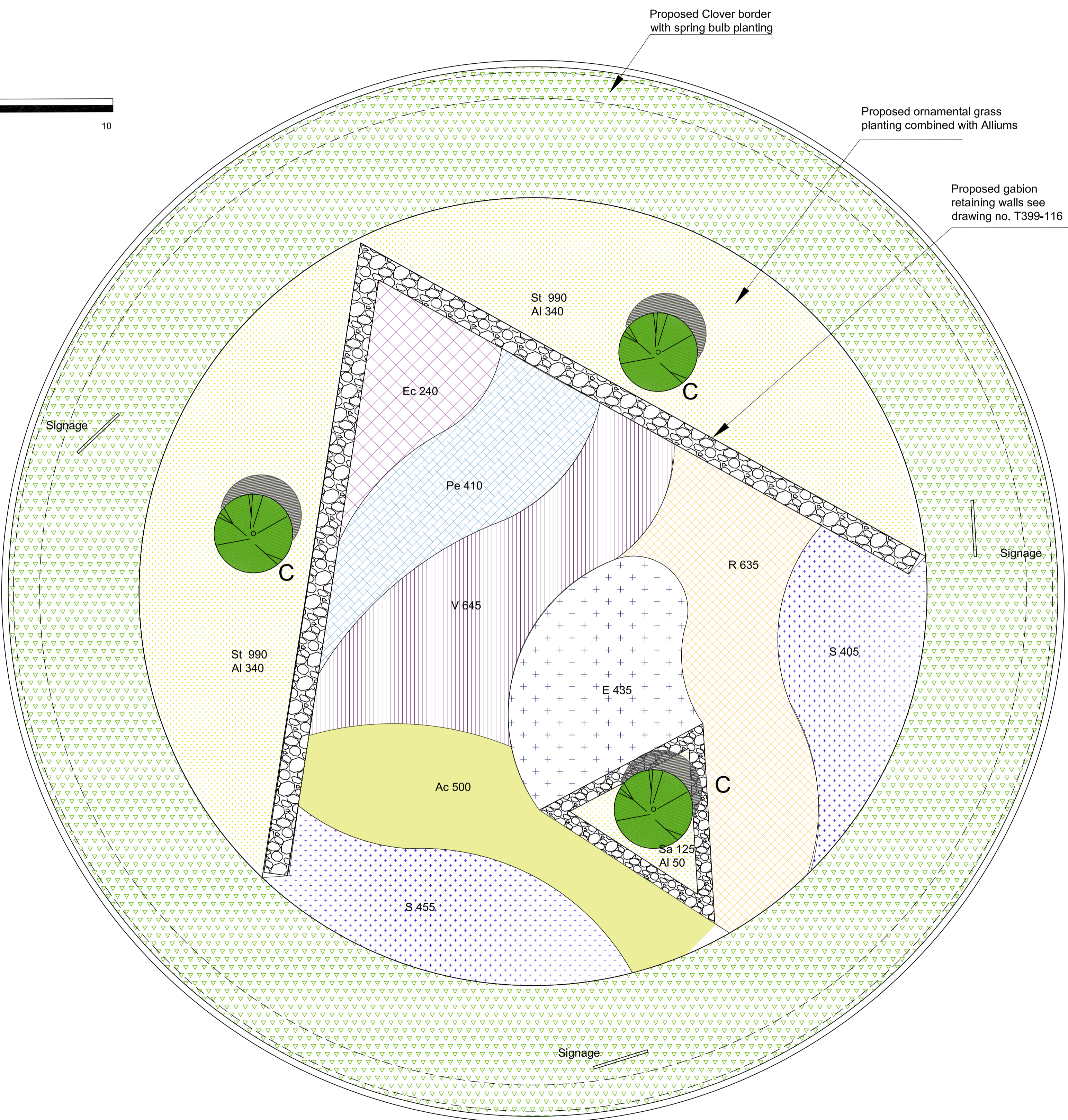
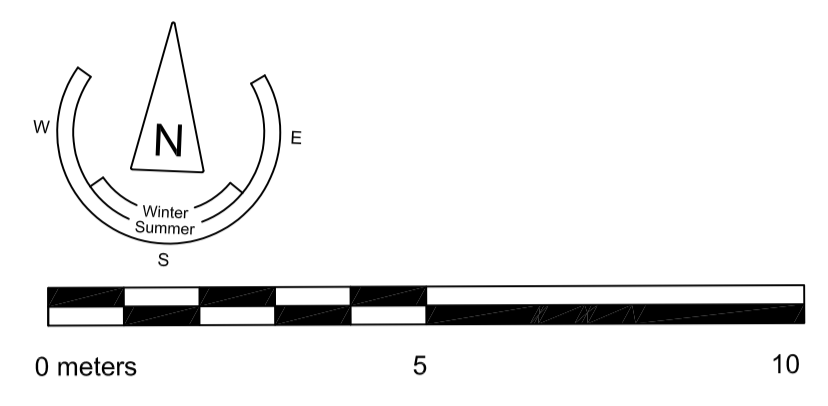


Rev. no.	Rev. description	Date	Sign	Chk'd
.
.



Legend

- Proposed 3 no native trees, with new prepared topsoil pit appropriate for root zone, see drawing no. T399-116
- Proposed ornamental grasses and allium planting, see plant list
- Proposed clover meadow with spring bulb planting, see plant list
- Proposed perennial planting scheme, see plant list
- Proposed gabion wall, retaining new sloped planting bed behind, see detail on Hardscape Plan

Plant List

Tree planting - as per locations shown

C Crataegus monogyna 'Stricta'
Multistemmed or feathered from base 20-25cm girth 3 no.

Clover meadow - Trifolium repens planting (570m²)
Spring bulb planting - 1m wide band (125m²)
Muscari latifolium 50/m² 6,000 no.

Perennial planting scheme
Ornamental grasses and Allium - 235m²
Perennial planting - 410m²
9cm container grown plants, planted at 9/m²

Notes:
Planting scheme have been selected to provide pollinator friendly environment with long period of flowering, no changes to planting material to be made without consulting LA
All plants to be locally sourced, Irish grown as inspection of quality at source of supply will be undertaken
Plants should be in compost with 9 month slow release fertiliser
Plants to be well established in pots
Plants need to be hardened off before supply
Plants to be in good condition, free of pest and diseases
This drawing to be read in conjunction with other drawings and specifications issued with this tender

Name	Quantity	feb	mar	apr	may	jun	jul	aug	sep	oct	nov
E Eryngium 'Blue Hobbit'	435										
Ac Achillea 'Moonshine'	500										
S Stachys hummelo	860										
Al Allium sphaerocephalon	730										
Pe Perovskia 'Blue Spire'	410										
V Verbena bonariensis	645										
R Rudbeckia 'Golstrum'	634										
Ec Echinacea purpurea 'Magnus'	240										
Sa Stipa arundinacea	125										
St Stipa tenuissima	1960										

FILE: C:\USERS\MARIANNA\DAVE RYAN\DAVE RYAN - TENDER\DWGS\LOGS\1398-16_BALLYCUMMIN\DWG PLOTTED: 10/12/2020 12:19 BY USER: MARIANNA



Note: No scaled measurements to be taken from this drawing, written dimensions only.
Scales are indicative only and can vary with different printing and photocopying methods.
This is not a construction document.
Further specification, measurements and levels can be provided at Tender or Construction phases as required by the client.

An Chomhairle Oidhreacht
The Heritage Council

Comhairle Cathrach
& Contae Luimnigh
Limerick City
& County Council

Client: Limerick City and County Council
Project: Landscape Designs and Maintenance Plans for Limerick City Roundabouts
Drg Title: 6- Ballycummin Roundabout Softworks
Stage: Tender Stage
Drg. No.: T399-126
Scale: 1:100 @ A1
Date: 2020, June 24th
Drawn By: MW Checked by: DR

DAVE RYAN
LANDSCAPE ARCHITECT
12 Barrington Street
Limerick
www.daveryan.ie
Tel.: 061 59 00 01
Mob.: 087 314 5 70
Email: info@daveryan.ie