

# Save Our Magnificent Meadows

Giles Knight



# Save our Magnificent Meadows



**Cotswolds Conservation Board**

**North West Kent & Medway Valley Countryside Partnership**

**Northumberland Wildlife Trust**

**Pori Natura Threftadaeth (PONT)**

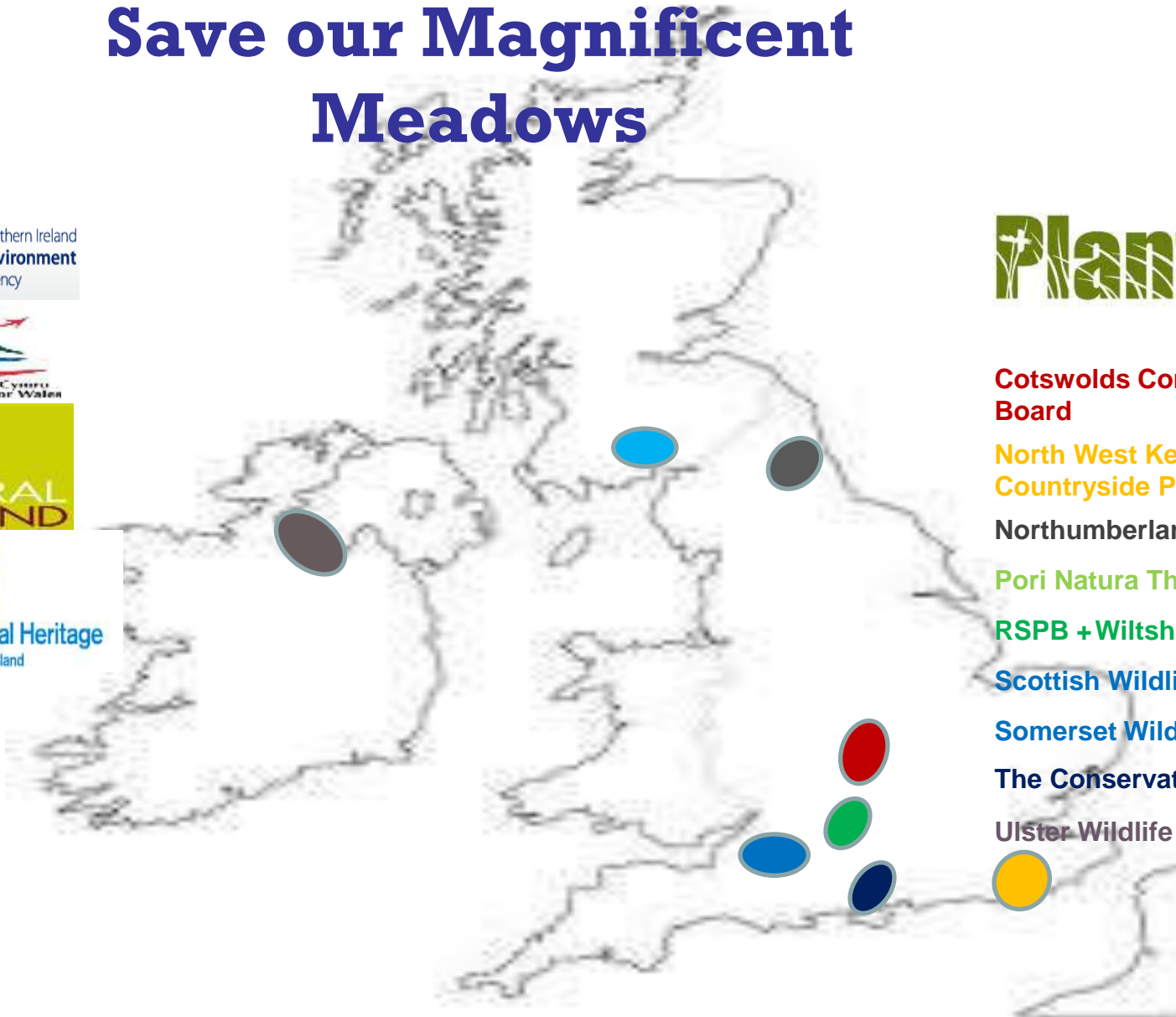
**RSPB + Wiltshire Wildlife Trust**

**Scottish Wildlife Trust**

**Somerset Wildlife Trust**

**The Conservation Volunteers**

**Ulster Wildlife Trust**





**This field offers:**

- Food (more)
- Low Biodiversity
- Monoculture landscape
- High input/output
- Neon green
- Ecological boredom



**This field offers:**

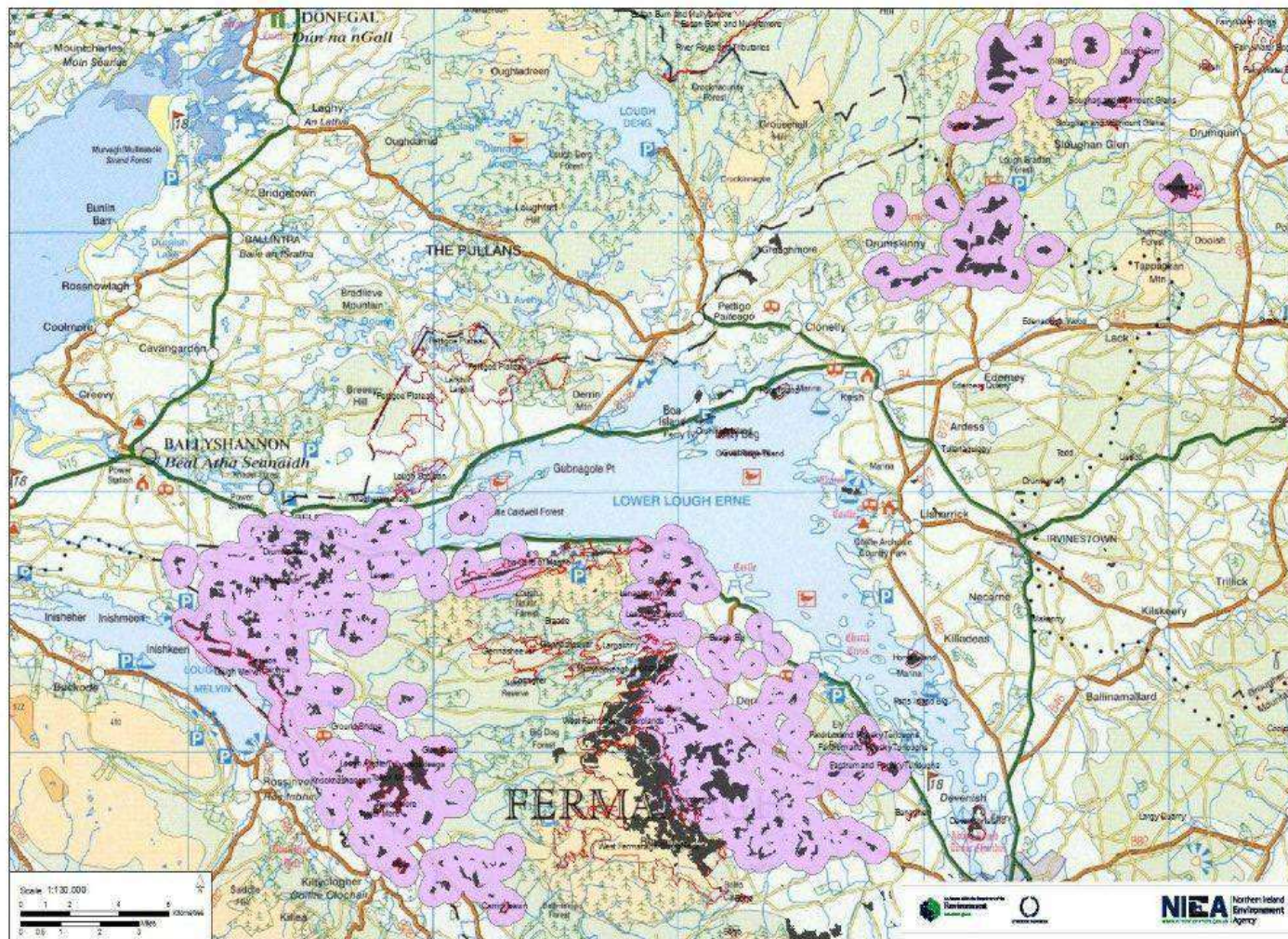
- Food from mixed herbage
- Human well-being/interest
- High Biodiversity
- Carbon Storage
- Water quality
- Resource protection
- Lower input/output
- 17 shades of green

# Grassland or arable SRG?



# Our Magnificent Meadows

## - where are they?



**Plantlife**

**NIEA** Northern Ireland Environment Agency  
[www.doeni.gov.uk/niea](http://www.doeni.gov.uk/niea)  
 An Agency within the Department of the Environment  
[www.doeni.gov.uk](http://www.doeni.gov.uk)

Department of Agriculture and Rural Development  
[www.dardni.gov.uk](http://www.dardni.gov.uk)  
 Talmhaíochta agus Forbartha Tuaithe  
 Mionrannóg Faoimne an Kinnra Foirdeir

**Butterfly Conservation**  
 Saving butterflies, moths and their habitats



Ulster Wildlife Trust

# Guardians

The word stewardship still means something here

Low input/output farming still survives here – why?

- traditional farming practice
- climate
- topography (hills and lakes)
- soil type and geology
- wildlife corridors
- cultural factors
- a sense of place
- designations
- agri-env schemes and public support



# Meadow wildlife



# Meadow management principles

- Reduced inputs and lower outputs
- Close off in April, after grazing or topping where necessary / applicable
- Cut in July or ideally in August
- Make hay if possible
- Graze aftermath in September / October with cattle if available

# Hand harvesting



# Vacuum harvesting



# Brush harvesting



# Hand haying



# Green haying



# Seed management



# Seed sowing



# Monastery Meadows



# Navar Meadows



# Species Rich Verges



# Upland Grazing Meadows



# Working together to help wildlife and human communities

- Target hitting
- Information gathering and knowledge transfer
- Opportunity spotting
- Demonstrating the art of the possible
- @gilesknight2

